

## Product datasheet for **TA343346**

### CABP4 Rabbit Polyclonal Antibody

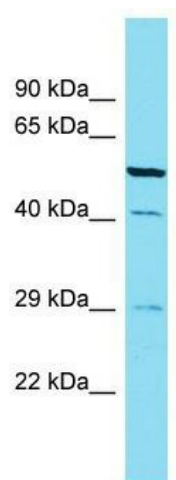
#### Product data:

Product Type:	Primary Antibodies
Applications:	WB
Recommended Dilution:	WB
Reactivity:	Rat
Host:	Rabbit
Isotype:	IgG
Clonality:	Polyclonal
Immunogen:	The immunogen for anti-Cabp4 antibody is: synthetic peptide directed towards the C-terminal region of Rat Cabp4. Synthetic peptide located within the following region: MLGVRELRIAFREFDKDRDGRITVAELRQAAPALLGEPLEGTELDEMLRD
Formulation:	Liquid. Purified antibody supplied in 1x PBS buffer with 0.09% (w/v) sodium azide and 2% sucrose.
Conjugation:	Unconjugated
Storage:	Store at -20°C as received.
Stability:	Stable for 12 months from date of receipt.
Predicted Protein Size:	29 kDa
Gene Name:	calcium binding protein 4
Database Link:	<a href="#">NP_660201</a> <a href="#">Entrez Gene 365394 Rat P57796</a>
Background:	The function of this protein remains unknown.
Synonyms:	CRSD; CSNB2B
Note:	Immunogen Sequence Homology: Dog: 100%; Pig: 100%; Rat: 100%; Horse: 100%; Human: 100%; Mouse: 100%; Bovine: 100%; Rabbit: 100%; Guinea pig: 100%; Zebrafish: 92%



[View online »](#)

## Product images:



Host: Rabbit; Target Name: Cabp4; Sample  
Tissue: Rat Lung lysates; Antibody Dilution: 1.0  
ug/ml