

Product datasheet for **TA343345**

SFTPA1 Rabbit Polyclonal Antibody

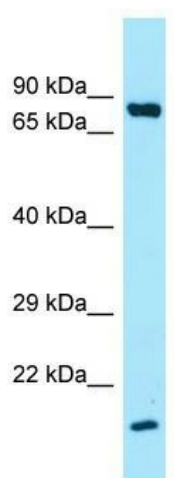
Product data:

Product Type:	Primary Antibodies
Applications:	WB
Recommended Dilution:	WB
Reactivity:	Human
Host:	Rabbit
Isotype:	IgG
Clonality:	Polyclonal
Immunogen:	The immunogen for anti-SFTPA1 antibody is: synthetic peptide directed towards the C-terminal region of Human SFTPA1. Synthetic peptide located within the following region: KYNTYAYVGLTEGSPGDFRYS DGTPVNYTNWYRGEPAGRGKEQCVMY T
Formulation:	Liquid. Purified antibody supplied in 1x PBS buffer with 0.09% (w/v) sodium azide and 2% sucrose. <i>Note that this product is shipped as lyophilized powder to China customers.</i>
Purification:	Affinity Purified
Conjugation:	Unconjugated
Storage:	Store at -20°C as received.
Stability:	Stable for 12 months from date of receipt.
Predicted Protein Size:	20 kDa
Gene Name:	surfactant protein A1
Database Link:	NP_001158118 Entrez Gene 653509 Human Q8IWL2
Background:	The function of this protein remains unknown.
Synonyms:	COLEC4; PSAP; PSP-A; PSPA; SFTP1; SFTPA1B; SP-A; SP-A1; SPA; SPA1
Note:	Immunogen Sequence Homology: Human: 100%; Dog: 92%; Pig: 85%; Horse: 85%; Mouse: 85%; Sheep: 85%; Bovine: 85%



[View online »](#)

Product images:



Host: Rabbit; Target Name: SFTP1; Sample
Tissue: HCT15 Whole Cell lysates; Antibody
Dilution: 1.0 ug/ml