

Product datasheet for **TA343344**

TBC1D4 Rabbit Polyclonal Antibody

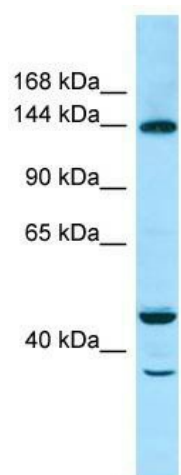
Product data:

Product Type:	Primary Antibodies
Applications:	WB
Recommended Dilution:	WB
Reactivity:	Human
Host:	Rabbit
Isotype:	IgG
Clonality:	Polyclonal
Immunogen:	The immunogen for anti-TBC1D4 antibody is: synthetic peptide directed towards the C-terminal region of Human TBC1D4. Synthetic peptide located within the following region: EMEKIITQVFEMDISKQLHAYEVEYHVLQDELQESSYSCEDSETLEKLER
Formulation:	Liquid. Purified antibody supplied in 1x PBS buffer with 0.09% (w/v) sodium azide and 2% sucrose. <i>Note that this product is shipped as lyophilized powder to China customers.</i>
Conjugation:	Unconjugated
Storage:	Store at -20°C as received.
Stability:	Stable for 12 months from date of receipt.
Predicted Protein Size:	146 kDa
Gene Name:	TBC1 domain family member 4
Database Link:	NP_055647 Entrez Gene 9882 Human O60343
Background:	TBC1D4 may act as a GTPase-activating protein for RAB2A, RAB8A, RAB10 and RAB14. Isoform 2 promotes insulin-induced glucose transporter SLC2A4/GLUT4 translocation at the plasma membrane, thus increasing glucose uptake.
Synonyms:	AS160; NIDDM5
Note:	Immunogen Sequence Homology: Human: 100%; Rabbit: 83%; Dog: 79%; Pig: 79%; Rat: 79%; Horse: 79%; Mouse: 79%; Bovine: 79%; Guinea pig: 79%



[View online »](#)

Product images:



WB Suggested Anti-TBC1D4 Antibody; Titration:
1.0 ug/ml; Positive Control: 721_B Whole Cell