

Product datasheet for **TA343343**

MASP1 Rabbit Polyclonal Antibody

Product data:

Product Type:	Primary Antibodies
Applications:	WB
Recommended Dilution:	WB
Reactivity:	Human
Host:	Rabbit
Isotype:	IgG
Clonality:	Polyclonal
Immunogen:	The immunogen for anti-MASP1 antibody is: synthetic peptide directed towards the N-terminal region of Human MASP1. Synthetic peptide located within the following region: PGSFMSITFRSDFSNEERFTGFDAHYMAVDVDECKEREDEELSCDHYCHN
Formulation:	Liquid. Purified antibody supplied in 1x PBS buffer with 0.09% (w/v) sodium azide and 2% sucrose. <i>Note that this product is shipped as lyophilized powder to China customers.</i>
Conjugation:	Unconjugated
Storage:	Store at -20°C as received.
Stability:	Stable for 12 months from date of receipt.
Predicted Protein Size:	28 kDa
Gene Name:	mannan binding lectin serine peptidase 1
Database Link:	NP_001870 Entrez Gene 5648 Human P48740



[View online »](#)

Background:

This gene encodes a serine protease that functions as a component of the lectin pathway of complement activation. The complement pathway plays an essential role in the innate and adaptive immune response. The encoded protein is synthesized as a zymogen and is activated when it complexes with the pathogen recognition molecules of lectin pathway, the mannose-binding lectin and the ficolins. This protein is not directly involved in complement activation but may play a role as an amplifier of complement activation by cleaving complement C2 or by activating another complement serine protease, MASP-2. The encoded protein is also able to cleave fibrinogen and factor XIII and may be involved in coagulation. A splice variant of this gene which lacks the serine protease domain functions as an inhibitor of the complement pathway.

Synonyms:

3MC1; CRARF; CRARF1; MAP1; MAp44; MASP; MASP3; PRSS5; RaRF

Note:

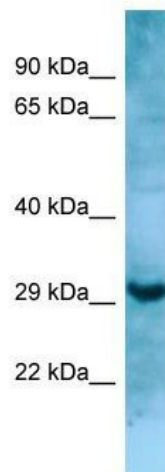
Immunogen Sequence Homology: Pig: 100%; Rat: 100%; Human: 100%; Mouse: 100%; Rabbit: 100%; Guinea pig: 100%; Dog: 93%; Horse: 93%; Bovine: 93%

Protein Families:

Druggable Genome, Protease

Protein Pathways:

Complement and coagulation cascades

Product images:

WB Suggested Anti-MASP1 Antibody; Titration: 1.0 ug/ml; Positive Control: HT1080 Whole Cell