

## Product datasheet for **TA343342**

### **BMP5 Rabbit Polyclonal Antibody**

#### **Product data:**

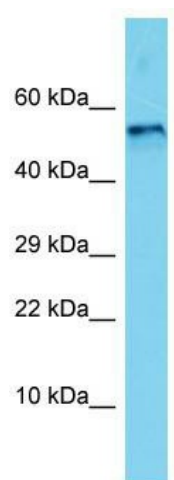
<b>Product Type:</b>	Primary Antibodies
<b>Applications:</b>	WB
<b>Recommended Dilution:</b>	WB
<b>Reactivity:</b>	Rat
<b>Host:</b>	Rabbit
<b>Isotype:</b>	IgG
<b>Clonality:</b>	Polyclonal
<b>Immunogen:</b>	The immunogen for anti-Bmp5 antibody is: synthetic peptide directed towards the C-terminal region of Rat Bmp5. Synthetic peptide located within the following region: NKSSSHQDPSRIPSAGDYNTSEKQACKKHELYVSFRDLGWQDWIIAPEG
<b>Formulation:</b>	Liquid. Purified antibody supplied in 1x PBS buffer with 0.09% (w/v) sodium azide and 2% sucrose. <i>Note that this product is shipped as lyophilized powder to China customers.</i>
<b>Conjugation:</b>	Unconjugated
<b>Storage:</b>	Store at -20°C as received.
<b>Stability:</b>	Stable for 12 months from date of receipt.
<b>Predicted Protein Size:</b>	49 kDa
<b>Gene Name:</b>	bone morphogenetic protein 5
<b>Database Link:</b>	<a href="#">NP_066551</a> <a href="#">Entrez Gene 315824 Rat P22003</a>
<b>Background:</b>	The function of this protein remains unknown.
<b>Synonyms:</b>	MGC34244
<b>Note:</b>	Immunogen Sequence Homology: Dog: 100%; Pig: 100%; Rat: 100%; Horse: 100%; Human: 100%; Mouse: 100%; Bovine: 100%; Rabbit: 100%; Guinea pig: 100%; Zebrafish: 86%
<b>Protein Families:</b>	Adult stem cells, Cancer stem cells, Druggable Genome, Embryonic stem cells, ES Cell Differentiation/IPS, Induced pluripotent stem cells, Secreted Protein, Stem cell relevant signaling - TGFb/BMP signaling pathway



[View online »](#)

Protein Pathways: Hedgehog signaling pathway, TGF-beta signaling pathway

### Product images:



Host: Rabbit; Target Name: Bmp5; Sample Tissue: Rat Brain lysates; Antibody Dilution: 1.0 ug/ml