

## Product datasheet for **TA343337**

### Eph receptor B3 (EPHB3) Rabbit Polyclonal Antibody

#### Product data:

Product Type:	Primary Antibodies
Applications:	WB
Recommended Dilution:	WB
Reactivity:	Human
Host:	Rabbit
Isotype:	IgG
Clonality:	Polyclonal
Immunogen:	The immunogen for anti-EPHB3 antibody is: synthetic peptide directed towards the C-terminal region of Human EPHB3. Synthetic peptide located within the following region: QLQEQPLIVGSATAGLVFVAVVIAIVCLRKQRHGSDSEYTEKLQQYI
Formulation:	Liquid. Purified antibody supplied in 1x PBS buffer with 0.09% (w/v) sodium azide and 2% sucrose. <i>Note that this product is shipped as lyophilized powder to China customers.</i>
Conjugation:	Unconjugated
Storage:	Store at -20°C as received.
Stability:	Stable for 12 months from date of receipt.
Predicted Protein Size:	107 kDa
Gene Name:	EPH receptor B3
Database Link:	<a href="#">NP_004434</a> <a href="#">Entrez Gene 2049 Human P54753</a>
Background:	Ephrin receptors and their ligands, the ephrins, mediate numerous developmental processes, particularly in the nervous system. Based on their structures and sequence relationships, ephrins are divided into the ephrin-A (EFNA) class, which are anchored to the membrane by a glycosylphosphatidylinositol linkage, and the ephrin-B (EFNB) class, which are transmembrane proteins. The Eph family of receptors are divided into two groups based on the similarity of their extracellular domain sequences and their affinities for binding ephrin-A and ephrin-B ligands. Ephrin receptors make up the largest subgroup of the receptor tyrosine kinase (RTK) family. This gene encodes a receptor for ephrin-B family members.



[View online »](#)

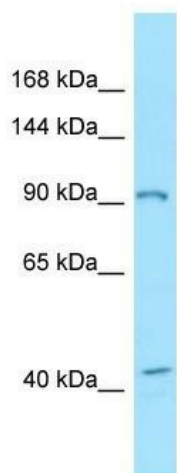
**Synonyms:** EK2; ETK2; HEK2; TYRO6

**Note:** Immunogen Sequence Homology: Dog: 100%; Horse: 100%; Human: 100%; Pig: 93%; Rat: 93%; Bovine: 93%; Rabbit: 93%; Guinea pig: 93%; Mouse: 86%; Zebrafish: 86%

**Protein Families:** Druggable Genome, Protein Kinase, Transmembrane

**Protein Pathways:** Axon guidance

### Product images:



WB Suggested Anti-EPHB3 Antibody; Titration: 1.0 ug/ml; Positive Control: HT1080 Whole Cell