

Product datasheet for **TA343334**

Ephrin B3 (EFNB3) Rabbit Polyclonal Antibody

Product data:

Product Type:	Primary Antibodies
Applications:	WB
Recommended Dilution:	WB
Reactivity:	Mouse
Host:	Rabbit
Isotype:	IgG
Clonality:	Polyclonal
Immunogen:	The immunogen for anti-Efnb3 antibody is: synthetic peptide directed towards the C-terminal region of Mouse Efnb3. Synthetic peptide located within the following region: AGAGGAMCWRRRRRAKPSESRHPGPGSFGGRGSLGLGGGGMGMPREAEPGE
Formulation:	Liquid. Purified antibody supplied in 1x PBS buffer with 0.09% (w/v) sodium azide and 2% sucrose. <i>Note that this product is shipped as lyophilized powder to China customers.</i>
Conjugation:	Unconjugated
Storage:	Store at -20°C as received.
Stability:	Stable for 12 months from date of receipt.
Predicted Protein Size:	36 kDa
Gene Name:	ephrin B3
Database Link:	NP_001397 Entrez Gene 13643 Mouse Q15768



[View online »](#)

Background: Cell surface transmembrane ligand for Eph receptors, a family of receptor tyrosine kinases which are crucial for migration, repulsion and adhesion during neuronal, vascular and epithelial development. Efnb3 binds promiscuously Eph receptors residing on adjacent cells, leading to contact-dependent bidirectional signaling into neighboring cells. The signaling pathway downstream of the receptor is referred to as forward signaling while the signaling pathway downstream of the ephrin ligand is referred to as reverse signaling. It may play a pivotal role in forebrain function. It binds to, and induce the collapse of, commissural axons/growth cones in vitro. Efnb3 may play a role in constraining the orientation of longitudinally projecting axons.

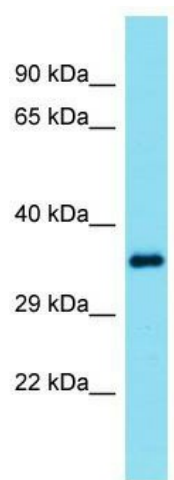
Synonyms: EFL6; EPLG8; LERK8

Note: Immunogen Sequence Homology: Dog: 100%; Pig: 100%; Rat: 100%; Horse: 100%; Human: 100%; Mouse: 100%; Bovine: 100%; Rabbit: 100%; Guinea pig: 100%

Protein Families: Druggable Genome, Transmembrane

Protein Pathways: Axon guidance

Product images:



Host: Rabbit; Target Name: Efnb3; Sample Tissue: Mouse Spleen lysates; Antibody Dilution: 1.0 ug/ml