

Product datasheet for **TA343333**

OAF Rabbit Polyclonal Antibody

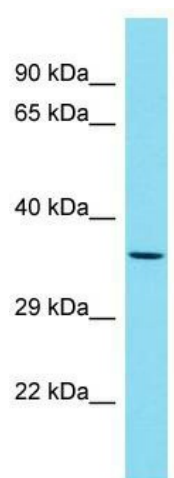
Product data:

Product Type:	Primary Antibodies
Applications:	WB
Recommended Dilution:	WB
Reactivity:	Human
Host:	Rabbit
Isotype:	IgG
Clonality:	Polyclonal
Immunogen:	The immunogen for anti-OAF antibody is: synthetic peptide directed towards the N-terminal region of Human OAF. Synthetic peptide located within the following region: PLLGTGAPAELRVRVRLPDGQVTEESLQADSDADSISLELRKPDGTLVSF
Formulation:	Liquid. Purified antibody supplied in 1x PBS buffer with 0.09% (w/v) sodium azide and 2% sucrose.
Conjugation:	Unconjugated
Storage:	Store at -20°C as received.
Stability:	Stable for 12 months from date of receipt.
Predicted Protein Size:	31 kDa
Gene Name:	out at first homolog
Database Link:	NP_848602 Entrez Gene 220323 Human Q86UD1
Background:	The function of this protein remains unknown.
Synonyms:	NS5ATP13TP2
Note:	Immunogen Sequence Homology: Pig: 100%; Rat: 100%; Horse: 100%; Human: 100%; Mouse: 100%; Bovine: 100%; Rabbit: 100%; Guinea pig: 85%



[View online »](#)

Product images:



Host: Rabbit; Target Name: OAF; Sample Tissue: HepG2 Whole Cell lysates; Antibody Dilution: 1.0 ug/ml