

Product datasheet for **TA343332**

IL3RA Rabbit Polyclonal Antibody

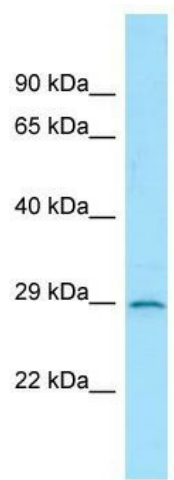
Product data:

| | |
|-------------------------|--|
| Product Type: | Primary Antibodies |
| Applications: | WB |
| Recommended Dilution: | WB |
| Reactivity: | Human |
| Host: | Rabbit |
| Isotype: | IgG |
| Clonality: | Polyclonal |
| Immunogen: | The immunogen for anti-IL3RA antibody is: synthetic peptide directed towards the middle region of Human IL3RA. Synthetic peptide located within the following region: APADVQYDLYLNVANRRQYECLEHYKTDAGTRIGCRFDDISRLSSGSQS |
| Formulation: | Liquid. Purified antibody supplied in 1x PBS buffer with 0.09% (w/v) sodium azide and 2% sucrose. <i>Note that this product is shipped as lyophilized powder to China customers.</i> |
| Purification: | Affinity Purified |
| Conjugation: | Unconjugated |
| Storage: | Store at -20°C as received. |
| Stability: | Stable for 12 months from date of receipt. |
| Predicted Protein Size: | 32 kDa |
| Gene Name: | interleukin 3 receptor subunit alpha |
| Database Link: | NP_002174 Entrez Gene 3563 Human P26951 |



[View online »](#)

| | |
|--------------------------|---|
| Background: | The protein encoded by this gene is an interleukin 3 specific subunit of a heterodimeric cytokine receptor. The receptor is comprised of a ligand specific alpha subunit and a signal transducing beta subunit shared by the receptors for interleukin 3 (IL3), colony stimulating factor 2 (CSF2/GM-CSF), and interleukin 5 (IL5). The binding of this protein to IL3 depends on the beta subunit. The beta subunit is activated by the ligand binding, and is required for the biological activities of IL3. This gene and the gene encoding the colony stimulating factor 2 receptor alpha chain (CSF2RA) form a cytokine receptor gene cluster in a X-Y pseudoautosomal region on chromosomes X or Y. |
| Synonyms: | CD123; hIL-3Ra; IL3R; IL3RAY; IL3RX; IL3RY |
| Note: | Immunogen Sequence Homology: Human: 100% |
| Protein Families: | Transmembrane |
| Protein Pathways: | Apoptosis, Cytokine-cytokine receptor interaction, Hematopoietic cell lineage, Jak-STAT signaling pathway |

Product images:

Host: Rabbit; Target Name: IL3RA; Sample Tissue: THP-1 whole cell lysates; Antibody Dilution: 1.0 ug/ml