

## Product datasheet for **TA343331**

### CD226 Rabbit Polyclonal Antibody

#### Product data:

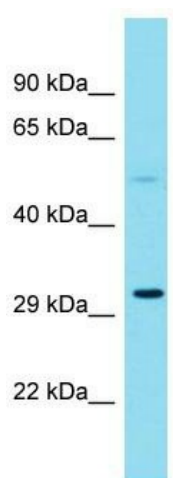
Product Type:	Primary Antibodies
Applications:	WB
Recommended Dilution:	WB
Reactivity:	Human
Host:	Rabbit
Isotype:	IgG
Clonality:	Polyclonal
Immunogen:	The immunogen for anti-CD226 antibody is: synthetic peptide directed towards the C-terminal region of Human CD226. Synthetic peptide located within the following region: QASAGENETFVMRLTVAEGKTDNQYTLFVAGGTLLLLFVISITTIVIF
Formulation:	Liquid. Purified antibody supplied in 1x PBS buffer with 0.09% (w/v) sodium azide and 2% sucrose. <i>Note that this product is shipped as lyophilized powder to China customers.</i>
Conjugation:	Unconjugated
Storage:	Store at -20°C as received.
Stability:	Stable for 12 months from date of receipt.
Predicted Protein Size:	36 kDa
Gene Name:	CD226 molecule
Database Link:	<a href="#">NP_006557</a> <a href="#">Entrez Gene 10666 Human Q15762</a>
Background:	This gene encodes a glycoprotein expressed on the surface of NK cells, platelets, monocytes and a subset of T cells. It is a member of the Ig-superfamily containing 2 Ig-like domains of the V-set. The protein mediates cellular adhesion of platelets and megakaryocytic cells to vascular endothelial cells. The protein also plays a role in megakaryocytic cell maturation.
Synonyms:	DNAM-1; DNAM1; PTA1; TLISA1
Note:	Immunogen Sequence Homology: Human: 100%; Dog: 85%; Rat
Protein Families:	Druggable Genome, Transmembrane



[View online »](#)

Protein Pathways: Cell adhesion molecules (CAMs)

### Product images:



Host: Rabbit

Target Name: CD226

Sample Tissue: Fetal Liver Lysate

Antibody Dilution: 1.0 $\mu$ g/ml

Host: Rabbit; Target Name: CD226; Sample Tissue: Fetal Liver lysates; Antibody Dilution: 1.0 ug/ml