

Product datasheet for **TA343329**

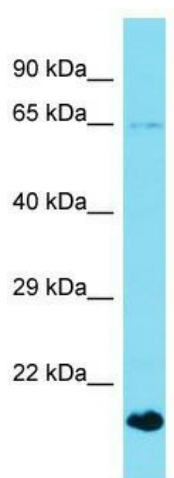
GCKR Rabbit Polyclonal Antibody

Product data:

| | |
|-------------------------|--|
| Product Type: | Primary Antibodies |
| Applications: | WB |
| Recommended Dilution: | WB |
| Reactivity: | Mouse |
| Host: | Rabbit |
| Isotype: | IgG |
| Clonality: | Polyclonal |
| Immunogen: | The immunogen for anti-Gckr antibody is: synthetic peptide directed towards the middle region of Mouse Gckr. Synthetic peptide located within the following region: FLPVLVGFNPVSMARNDPIEDWRSTFRQVAERMQKMQEAFVLNPAIG |
| Formulation: | Liquid. Purified antibody supplied in 1x PBS buffer with 0.09% (w/v) sodium azide and 2% sucrose. <i>Note that this product is shipped as lyophilized powder to China customers.</i> |
| Conjugation: | Unconjugated |
| Storage: | Store at -20°C as received. |
| Stability: | Stable for 12 months from date of receipt. |
| Predicted Protein Size: | 65 kDa |
| Gene Name: | glucokinase (hexokinase 4) regulator |
| Database Link: | NP_001477 Entrez Gene 231103 Mouse Q14397 |
| Background: | Gckr inhibits glucokinase by forming an inactive complex with this enzyme. |
| Synonyms: | FGQTL5; GKRP |
| Note: | Immunogen Sequence Homology: Rat: 100%; Human: 100%; Mouse: 100%; Pig: 92%; Guinea pig: 92%; Dog: 85%; Rabbit: 85%; Yeast: 82%; Bovine: 82%; Horse |



[View online »](#)

Product images:

Host: Rabbit; Target Name: Gckr; Sample Tissue: Mouse Brain lysates; Antibody Dilution: 1.0 ug/ml