

## Product datasheet for **TA343327**

### **RADIL Rabbit Polyclonal Antibody**

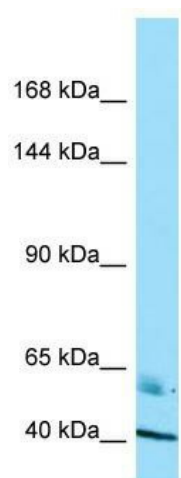
#### **Product data:**

Product Type:	Primary Antibodies
Applications:	WB
Recommended Dilution:	WB
Reactivity:	Human
Host:	Rabbit
Isotype:	IgG
Clonality:	Polyclonal
Immunogen:	The immunogen for anti-RADIL antibody is: synthetic peptide directed towards the C-terminal region of Human RADIL. Synthetic peptide located within the following region: LGDRILEVNGSSLLGLGYLRAVDLIRHGGKMRFLVAKSDVETAKKIHFR
Formulation:	Liquid. Purified antibody supplied in 1x PBS buffer with 0.09% (w/v) sodium azide and 2% sucrose. <i>Note that this product is shipped as lyophilized powder to China customers.</i>
Purification:	Affinity Purified
Conjugation:	Unconjugated
Storage:	Store at -20°C as received.
Stability:	Stable for 12 months from date of receipt.
Predicted Protein Size:	63 kDa
Gene Name:	Rap associating with DIL domain
Database Link:	<a href="#">NP_060529</a> <a href="#">Entrez Gene 55698 Human</a> <a href="#">Q96JH8</a>
Background:	RADIL is a downstream effector of Rap required for cell adhesion and migration of neural crest precursors during development.
Synonyms:	RASIP2
Note:	Immunogen Sequence Homology: Pig: 100%; Rat: 100%; Human: 100%; Guinea pig: 100%; Dog: 93%; Horse: 93%; Mouse: 86%; Bovine: 79%; Rabbit: 79%



[View online »](#)

## Product images:



Host: Rabbit; Target Name: RADIL; Sample Tissue: OVCAR-3 Whole Cell lysates; Antibody Dilution: 1.0 ug/ml