

Product datasheet for **TA343326**

IDUA Rabbit Polyclonal Antibody

Product data:

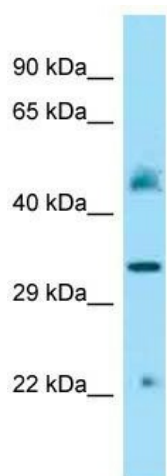
Product Type:	Primary Antibodies
Applications:	WB
Recommended Dilution:	WB
Reactivity:	Mouse
Host:	Rabbit
Isotype:	IgG
Clonality:	Polyclonal
Immunogen:	The immunogen for anti-Idua antibody is: synthetic peptide directed towards the middle region of MOUSE Idua. Synthetic peptide located within the following region: MENQLLPGFELMGSPSGYFTDFDDKQVFEWKDLVSSLARRYIGRYGLTH
Formulation:	Liquid. Purified antibody supplied in 1x PBS buffer with 0.09% (w/v) sodium azide and 2% sucrose. <i>Note that this product is shipped as lyophilized powder to China customers.</i>
Purification:	Affinity Purified
Conjugation:	Unconjugated
Storage:	Store at -20°C as received.
Stability:	Stable for 12 months from date of receipt.
Predicted Protein Size:	30 kDa
Gene Name:	iduronidase, alpha-L-
Database Link:	NP_000194 Entrez Gene 15932 Mouse P35475
Background:	The function of this protein remains unknown.
Synonyms:	IDA; MPS1
Note:	Immunogen Sequence Homology: Pig: 100%; Horse: 100%; Human: 100%; Guinea pig: 100%; Rat: 93%; Dog: 90%; Mouse: 86%; Bovine: 86%
Protein Families:	Druggable Genome



[View online »](#)

Protein Pathways: Glycosaminoglycan degradation, Lysosome, Metabolic pathways

Product images:



Host: Rabbit; Target Name: Idua; Sample Tissue: Mouse Kidney lysates; Antibody Dilution: 1.0 ug/ml