

Product datasheet for **TA343325**

IDUA Rabbit Polyclonal Antibody

Product data:

Product Type:	Primary Antibodies
Applications:	WB
Recommended Dilution:	WB
Reactivity:	Human
Host:	Rabbit
Isotype:	IgG
Clonality:	Polyclonal
Immunogen:	The immunogen for anti-IDUA antibody is: synthetic peptide directed towards the C-terminal region of Human IDUA. Synthetic peptide located within the following region: DPVAAAPRPLPAGGRLTLRPALRLPSLLLHVHVCARPEKPPGQVTRLRALP
Formulation:	Liquid. Purified antibody supplied in 1x PBS buffer with 0.09% (w/v) sodium azide and 2% sucrose. <i>Note that this product is shipped as lyophilized powder to China customers.</i>
Purification:	Affinity Purified
Conjugation:	Unconjugated
Storage:	Store at -20°C as received.
Stability:	Stable for 12 months from date of receipt.
Predicted Protein Size:	74 kDa
Gene Name:	iduronidase, alpha-L-
Database Link:	NP_000194 Entrez Gene 3425 Human P35475
Background:	This gene encodes an enzyme that hydrolyzes the terminal alpha-L-iduronic acid residues of two glycosaminoglycans, dermatan sulfate and heparan sulfate. This hydrolysis is required for the lysosomal degradation of these glycosaminoglycans. Mutations in this gene that result in enzymatic deficiency lead to the autosomal recessive disease mucopolysaccharidosis type I (MPS I).
Synonyms:	IDA; MPS1



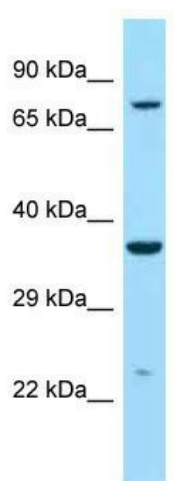
[View online »](#)

Note: Immunogen Sequence Homology: Horse: 100%; Human: 100%; Dog: 93%; Bovine: 93%; Pig: 86%; Mouse: 86%; Guinea pig: 86%; Rat: 80%

Protein Families: Druggable Genome

Protein Pathways: Glycosaminoglycan degradation, Lysosome, Metabolic pathways

Product images:



Host: Rabbit; Target Name: IDUA; Sample Tissue: ACHN whole cell lysates; Antibody Dilution: 1.0 ug/ml