

## Product datasheet for **TA343324**

### LILRB5 Rabbit Polyclonal Antibody

#### Product data:

|                         |  |
|-------------------------|--|
| Product Type:           | Primary Antibodies   |
| Applications:           | WB   |
| Recommended Dilution:   | WB   |
| Reactivity:             | Human  |
| Host:                   | Rabbit   |
| Isotype:                | IgG  |
| Clonality:              | Polyclonal   |
| Immunogen:              | The immunogen for anti-LILRB5 antibody is: synthetic peptide directed towards the C-terminal region of Human LILRB5. Synthetic peptide located within the following region: AGPEPKDQGLQKRASPVADIQEEILNAAVKDTQPKDGVEMDARAAASEAP |
| Formulation:            | Liquid. Purified antibody supplied in 1x PBS buffer with 0.09% (w/v) sodium azide and 2% sucrose.<br><i>Note that this product is shipped as lyophilized powder to China customers.</i>  |
| Purification:           | Affinity Purified  |
| Conjugation:            | Unconjugated   |
| Storage:                | Store at -20°C as received.  |
| Stability:              | Stable for 12 months from date of receipt.   |
| Predicted Protein Size: | 54 kDa   |
| Gene Name:              | leukocyte immunoglobulin like receptor B5  |
| Database Link:          | <a href="#">NP_001074911</a><br><a href="#">Entrez Gene 10990 Human</a><br><a href="#">O75023</a>  |



[View online »](#)

**Background:**

This gene is a member of the leukocyte immunoglobulin-like receptor (LIR) family, which is found in a gene cluster at chromosomal region 19q13.4. The encoded protein belongs to the subfamily B class of LIR receptors which contain two or four extracellular immunoglobulin domains, a transmembrane domain, and two to four cytoplasmic immunoreceptor tyrosine-based inhibitory motifs (ITIMs). Several other LIR subfamily B receptors are expressed on immune cells where they bind to MHC class I molecules on antigen-presenting cells and inhibit stimulation of an immune response. Multiple transcript variants encoding different isoforms have been found for this gene.

**Synonyms:**

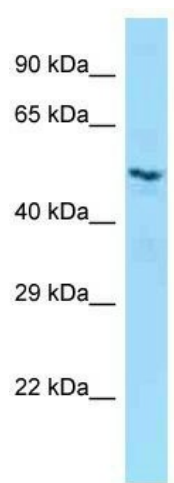
CD85C; LIR-8; LIR8

**Note:**

Immunogen Sequence Homology: Human: 100%

**Protein Families:**

Transmembrane

**Product images:**

Host: Rabbit; Target Name: LILRB5; Sample Tissue: OVCAR-3 Whole Cell lysates; Antibody Dilution: 1.0 ug/ml LILRB5 is supported by BioGPS gene expression data to be expressed in OVCAR3