

Product datasheet for **TA343323**

MAD1 (MAD1L1) Rabbit Polyclonal Antibody

Product data:

Product Type:	Primary Antibodies
Applications:	WB
Recommended Dilution:	WB
Reactivity:	Human
Host:	Rabbit
Isotype:	IgG
Clonality:	Polyclonal
Immunogen:	The immunogen for anti-MAD1L1 antibody is: synthetic peptide directed towards the N-terminal region of Human MAD1L1. Synthetic peptide located within the following region: EKQELQEQLDLQHKKCQEANQKIQLQASQEARADHEQQIKDLEQKLSLQ
Formulation:	Liquid. Purified antibody supplied in 1x PBS buffer with 0.09% (w/v) sodium azide and 2% sucrose. <i>Note that this product is shipped as lyophilized powder to China customers.</i>
Conjugation:	Unconjugated
Storage:	Store at -20°C as received.
Stability:	Stable for 12 months from date of receipt.
Predicted Protein Size:	78 kDa
Gene Name:	MAD1 mitotic arrest deficient like 1
Database Link:	NP_003541 Entrez Gene 8379 Human Q9Y6D9
Background:	MAD1L1 is a component of the mitotic spindle-assembly checkpoint that prevents the onset of anaphase until all chromosome are properly aligned at the metaphase plate. MAD1L1 functions as a homodimer and interacts with MAD2L1. MAD1L1 may play a role in cell cycle control and tumor suppression. Three transcript variants encoding the same protein have been found for this gene.
Synonyms:	MAD1; PIG9; TP53I9; TXBP181



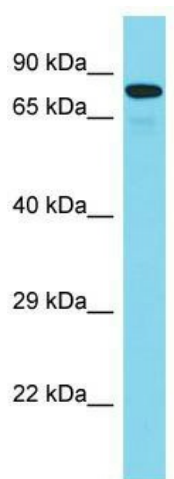
[View online »](#)

Note: Immunogen Sequence Homology: Human: 100%; Rabbit: 100%; Dog: 93%; Horse: 93%; Pig: 86%; Rat: 86%; Guinea pig: 86%; Mouse: 79%; Bovine: 79%

Protein Families: Druggable Genome

Protein Pathways: Cell cycle

Product images:



Host: Rabbit; Target Name: MAD1L1; Sample Tissue: Placenta lysates; Antibody Dilution: 1.0 ug/ml