

## Product datasheet for TA343322

### GRB 14 (GRB14) Rabbit Polyclonal Antibody

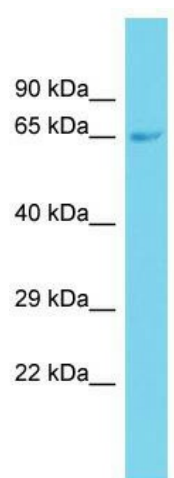
#### Product data:

|                         |  |
|-------------------------|--|
| Product Type:           | Primary Antibodies   |
| Applications:           | WB   |
| Recommended Dilution:   | WB   |
| Reactivity:             | Rat  |
| Host:                   | Rabbit   |
| Isotype:                | IgG  |
| Clonality:              | Polyclonal   |
| Immunogen:              | The immunogen for anti-Grb14 antibody is: synthetic peptide directed towards the middle region of Rat Grb14. Synthetic peptide located within the following region:<br>KAYFFLRSSGLYFSTKGTSGKEPRHLQFFSEFSTSNVYMSLAGKKKHGAPT |
| Formulation:            | Liquid. Purified antibody supplied in 1x PBS buffer with 0.09% (w/v) sodium azide and 2% sucrose.<br><i>Note that this product is shipped as lyophilized powder to China customers.</i>                                    |
| Conjugation:            | Unconjugated   |
| Storage:                | Store at -20°C as received.  |
| Stability:              | Stable for 12 months from date of receipt.   |
| Predicted Protein Size: | 59 kDa   |
| Gene Name:              | growth factor receptor bound protein 14  |
| Database Link:          | <a href="#">NP_004481</a><br><a href="#">Entrez Gene 58844 Rat</a><br><a href="#">Q14449</a>   |
| Background:             | Grb14 is a member of the Grb7 subfamily of adapters; It functions as inhibitor in insulin-mediated pathways.   |
| Synonyms:               | growth factor receptor-bound protein 14  |
| Note:                   | Immunogen Sequence Homology: Dog: 100%; Pig: 100%; Rat: 100%; Horse: 100%; Human: 100%; Mouse: 100%; Bovine: 100%; Rabbit: 100%; Guinea pig: 93%; Zebrafish: 86%; Goat: 85%  |



[View online »](#)

## Product images:



Host: Rabbit; Target Name: Grb14; Sample  
Tissue: Rat Testis lysates; Antibody Dilution: 1.0  
ug/ml