

Product datasheet for **TA343321**

SAP102 (DLG3) Rabbit Polyclonal Antibody

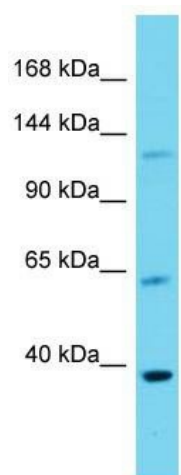
Product data:

| | |
|-------------------------|--|
| Product Type: | Primary Antibodies |
| Applications: | WB |
| Recommended Dilution: | WB |
| Reactivity: | Mouse |
| Host: | Rabbit |
| Isotype: | IgG |
| Clonality: | Polyclonal |
| Immunogen: | The immunogen for anti-Dlg3 antibody is: synthetic peptide directed towards the middle region of Mouse Dlg3. Synthetic peptide located within the following region: FGSCVPHTRPRRDNEVDGQDYHFVVSREQMEKDIQDNKFIEAGQFNDNL |
| Formulation: | Liquid. Purified antibody supplied in 1x PBS buffer with 0.09% (w/v) sodium azide and 2% sucrose. <i>Note that this product is shipped as lyophilized powder to China customers.</i> |
| Conjugation: | Unconjugated |
| Storage: | Store at -20°C as received. |
| Stability: | Stable for 12 months from date of receipt. |
| Predicted Protein Size: | 40 kDa |
| Gene Name: | discs large MAGUK scaffold protein 3 |
| Database Link: | NP_066943 Entrez Gene 53310 Mouse Q92796 |
| Background: | Dlg3 is required for learning most likely through its role in synaptic plasticity following NMDA receptor signaling. |
| Synonyms: | MRX; MRX90; NEDLG; PPP1R82; SAP102; XLMR |
| Note: | Immunogen Sequence Homology: Dog: 100%; Pig: 100%; Rat: 100%; Horse: 100%; Human: 100%; Mouse: 100%; Bovine: 100%; Rabbit: 100%; Zebrafish: 100%; Guinea pig: 100% |



[View online »](#)

Product images:



Host: Rabbit; Target Name: Dlg3; Sample Tissue: Mouse Lung lysates; Antibody Dilution: 1.0 ug/ml