

Product datasheet for TA343320

SSH3BP1 (ABII) Rabbit Polyclonal Antibody

Product data:

Product Type:	Primary Antibodies
Applications:	WB
Recommended Dilution:	WB
Reactivity:	Human
Host:	Rabbit
Isotype:	IgG
Clonality:	Polyclonal
Immunogen:	The immunogen for anti-ABII antibody is: synthetic peptide directed towards the N-terminal region of Human ABII. Synthetic peptide located within the following region: MAELQMLLEEEIPSGKRALIESYQNLTRVADYCENNYIQATDKRKALEET
Formulation:	Liquid. Purified antibody supplied in 1x PBS buffer with 0.09% (w/v) sodium azide and 2% sucrose. <i>Note that this product is shipped as lyophilized powder to China customers.</i>
Conjugation:	Unconjugated
Storage:	Store at -20°C as received.
Stability:	Stable for 12 months from date of receipt.
Predicted Protein Size:	55 kDa
Gene Name:	abl interactor 1
Database Link:	NP_005461 Entrez Gene 10006 Human Q8IZP0



Background:

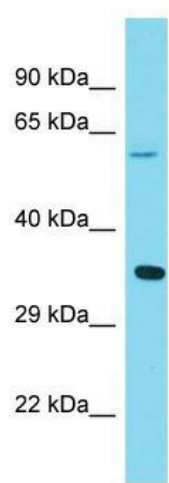
This gene encodes a member of the Abelson-interactor family of adaptor proteins. These proteins facilitate signal transduction as components of several multiprotein complexes, and regulate actin polymerization and cytoskeletal remodeling through interactions with Abelson tyrosine kinases. The encoded protein plays a role in macropinocytosis as a component of the WAVE2 complex, and also forms a complex with EPS8 and SOS1 that mediates signal transduction from Ras to Rac. This gene may play a role in the progression of several malignancies including melanoma, colon cancer and breast cancer, and a t(10;11) chromosomal translocation involving this gene and the MLL gene has been associated with acute myeloid leukemia. Alternatively spliced transcript variants encoding multiple isoforms have been observed for this gene, and a pseudogene of this gene is located on the long arm of chromosome 14.

Synonyms:

ABI-1; ABLBP4; E3B1; NAP1BP; SSH3BP; SSH3BP1

Note:

Immunogen Sequence Homology: Dog: 100%; Pig: 100%; Rat: 100%; Human: 100%; Bovine: 100%; Rabbit: 100%; Horse: 93%; Mouse: 93%; Guinea pig: 93%; Zebrafish: 86%

Product images:

Host: Rabbit; Target Name: ABI1; Sample Tissue: 293T Whole Cell lysates; Antibody Dilution: 1.0 ug/ml ABI1 is supported by BioGPS gene expression data to be expressed in HEK293T