

Product datasheet for **TA343319**

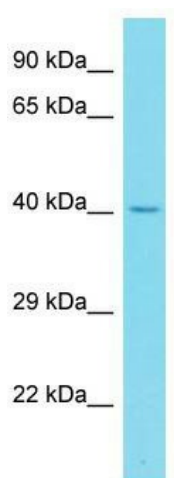
ABI3 Rabbit Polyclonal Antibody

Product data:

Product Type:	Primary Antibodies
Applications:	WB
Recommended Dilution:	WB
Reactivity:	Mouse
Host:	Rabbit
Isotype:	IgG
Clonality:	Polyclonal
Immunogen:	The immunogen for anti-Abi3 antibody is: synthetic peptide directed towards the C-terminal region of Mouse Abi3. Synthetic peptide located within the following region: DEPSWVPASYLEKVVTLYPYTRQKDNELSFSEGTVICVTRRYS DGWCEGV
Formulation:	Liquid. Purified antibody supplied in 1x PBS buffer with 0.09% (w/v) sodium azide and 2% sucrose.
Conjugation:	Unconjugated
Storage:	Store at -20°C as received.
Stability:	Stable for 12 months from date of receipt.
Predicted Protein Size:	39 kDa
Gene Name:	ABI family member 3
Database Link:	NP_057512 Entrez Gene 66610 Mouse Q9P2A4
Background:	Abi3 inhibits ectopic tumor cell metastasis of SRD cells. In vitro, It reduces cell motility.
Synonyms:	NESH; SSH3BP3
Note:	Immunogen Sequence Homology: Human: 100%; Pig: 93%; Rat: 93%; Horse: 93%; Mouse: 93%; Bovine: 93%; Rabbit: 93%; Dog: 92%



[View online »](#)

Product images:

Host: Rabbit; Target Name: Abi3; Sample Tissue: Mouse Heart lysates; Antibody Dilution: 1.0 ug/ml