

Product datasheet for **TA343317**

LIPC Rabbit Polyclonal Antibody

Product data:

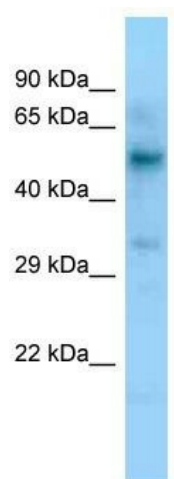
Product Type:	Primary Antibodies
Applications:	WB
Recommended Dilution:	WB
Reactivity:	Human
Host:	Rabbit
Isotype:	IgG
Clonality:	Polyclonal
Immunogen:	The immunogen for anti-LIPC antibody is: synthetic peptide directed towards the C-terminal region of LIPC. Synthetic peptide located within the following region: LKTIRVKAGETQQRMTFCSENTDDLRLRPTQEKIFVKCEIKSKTSKRKIR
Formulation:	Liquid. Purified antibody supplied in 1x PBS buffer with 0.09% (w/v) sodium azide and 2% sucrose. <i>Note that this product is shipped as lyophilized powder to China customers.</i>
Conjugation:	Unconjugated
Storage:	Store at -20°C as received.
Stability:	Stable for 12 months from date of receipt.
Predicted Protein Size:	55 kDa
Gene Name:	lipase C, hepatic type
Database Link:	NP_000227 Entrez Gene 3990 Human P11150
Background:	LIPC encodes hepatic triglyceride lipase, which is expressed in liver. LIPC has the dual functions of triglyceride hydrolase and ligand/bridging factor for receptor-mediated lipoprotein uptake.
Synonyms:	HDLCQ12; HL; HTGL; LIPH
Note:	Immunogen Sequence Homology: Human: 100%
Protein Families:	Druggable Genome, Secreted Protein



[View online »](#)

Protein Pathways: Glycerolipid metabolism, Metabolic pathways

Product images:



WB Suggested Anti-LIPC Antibody; Titration: 1.0 ug/ml; Positive Control: Fetal Liver