

Product datasheet for **TA343316**

RPTP mu (PTPRM) Rabbit Polyclonal Antibody

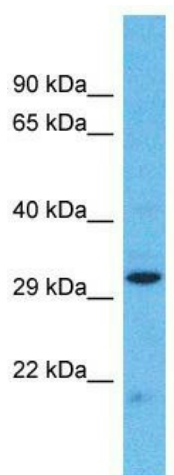
Product data:

Product Type:	Primary Antibodies
Applications:	WB
Recommended Dilution:	WB
Reactivity:	Human
Host:	Rabbit
Isotype:	IgG
Clonality:	Polyclonal
Immunogen:	The immunogen for anti-PTPRM antibody is: synthetic peptide directed towards the middle region of Human PTPRM. Synthetic peptide located within the following region: QQFQFLGWPMYRDTPVSKRSFLKLRQVDKWQEEYNGGEGRTVHCLNGG
Formulation:	Liquid. Purified antibody supplied in 1x PBS buffer with 0.09% (w/v) sodium azide and 2% sucrose.
Purification:	Affinity Purified
Conjugation:	Unconjugated
Storage:	Store at -20°C as received.
Stability:	Stable for 12 months from date of receipt.
Predicted Protein Size:	30 kDa
Gene Name:	protein tyrosine phosphatase, receptor type M
Database Link:	NP_001098714 Entrez Gene 5797 Human P28827
Background:	The function of this protein remains unknown.
Synonyms:	hR-PTPu; PTPRL1; R-PTP-MU; RPTPM; RPTPU
Note:	Immunogen Sequence Homology: Dog: 100%; Pig: 100%; Rat: 100%; Horse: 100%; Human: 100%; Mouse: 100%; Bovine: 100%; Rabbit: 100%; Guinea pig: 100%; Zebrafish: 93%
Protein Families:	Druggable Genome, Phosphatase, Transmembrane
Protein Pathways:	Adherens junction, Cell adhesion molecules (CAMs)



[View online »](#)

Product images:



Host: Rabbit; Target Name: PTPRM; Sample
Tissue: 293T Whole Cell lysates; Antibody
Dilution: 1.0 ug/ml