

## Product datasheet for **TA343314**

### CD200 Rabbit Polyclonal Antibody

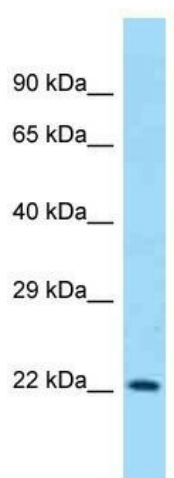
#### Product data:

Product Type:	Primary Antibodies
Applications:	WB
Recommended Dilution:	WB
Reactivity:	Human
Host:	Rabbit
Isotype:	IgG
Clonality:	Polyclonal
Immunogen:	The immunogen for anti-CD200 antibody is: synthetic peptide directed towards the C-terminal region of Human CD200. Synthetic peptide located within the following region: PRSGIENSTVTLSHPNGTTSVTSILHIKDPKNQVGKEVICQVLHLGTVTD
Formulation:	Liquid. Purified antibody supplied in 1x PBS buffer with 0.09% (w/v) sodium azide and 2% sucrose. <i>Note that this product is shipped as lyophilized powder to China customers.</i>
Purification:	Affinity Purified
Conjugation:	Unconjugated
Storage:	Store at -20°C as received.
Stability:	Stable for 12 months from date of receipt.
Predicted Protein Size:	21 kDa
Gene Name:	CD200 molecule
Database Link:	<a href="#">NP_005935</a> <a href="#">Entrez Gene 4345 Human P41217</a>
Background:	The function of this protein remains unknown.
Synonyms:	MOX1; MOX2; MRC; OX-2
Note:	Immunogen Sequence Homology: Human: 100%; Pig: 86%; Dog: 79%; Rat: 79%; Mouse: 79%; Bovine: 79%; Rabbit: 79%; Guinea pig: 79%
Protein Families:	Transmembrane



[View online »](#)

## Product images:



Host: Rabbit; Target Name: CD200; Sample  
Tissue: HeLa Whole cell lysates; Antibody Dilution:  
1.0 ug/ml