

## Product datasheet for **TA343313**

### AASS Rabbit Polyclonal Antibody

#### Product data:

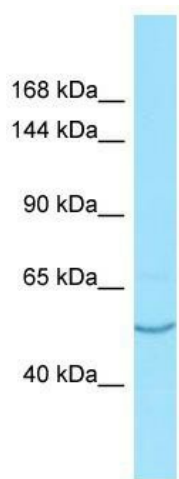
Product Type:	Primary Antibodies
Applications:	WB
Recommended Dilution:	WB
Reactivity:	Human
Host:	Rabbit
Isotype:	IgG
Clonality:	Polyclonal
Immunogen:	The immunogen for anti-AASS antibody is: synthetic peptide directed towards the C-terminal region of Human AASS. Synthetic peptide located within the following region: HHHLVRKTDVAVYDPAEYDKHPERYISRFNTDIAPYTTCLINGIYWEQNTP
Formulation:	Liquid. Purified antibody supplied in 1x PBS buffer with 0.09% (w/v) sodium azide and 2% sucrose. <i>Note that this product is shipped as lyophilized powder to China customers.</i>
Purification:	Affinity Purified
Conjugation:	Unconjugated
Storage:	Store at -20°C as received.
Stability:	Stable for 12 months from date of receipt.
Predicted Protein Size:	56 kDa
Gene Name:	aminoadipate-semialdehyde synthase
Database Link:	<a href="#">NP_005754</a> <a href="#">Entrez Gene 10157 Human</a> <a href="#">Q9UDR5</a>
Background:	The function of this protein remains unknown.
Synonyms:	LKR; LKRSDH; LORS DH; SDH
Note:	Immunogen Sequence Homology: Human: 100%; Dog: 86%; Pig: 86%; Rat: 86%; Bovine: 86%; Rabbit: 86%; Guinea pig: 86%; Horse: 79%
Protein Families:	Druggable Genome



[View online »](#)

Protein Pathways: Lysine biosynthesis, Lysine degradation, Metabolic pathways

**Product images:**



Host: Rabbit; Target Name: AASS; Sample Tissue: THP-1 Whole Cell lysates; Antibody Dilution: 1.0 ug/ml