

## Product datasheet for **TA343312**

### RAP1A Rabbit Polyclonal Antibody

#### Product data:

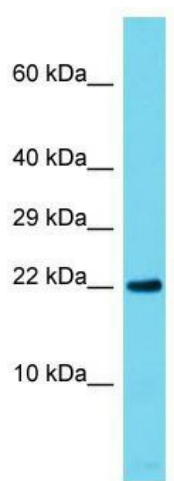
Product Type:	Primary Antibodies
Applications:	WB
Recommended Dilution:	WB
Reactivity:	Mouse
Host:	Rabbit
Isotype:	IgG
Clonality:	Polyclonal
Immunogen:	The immunogen for anti-Rap1a antibody is: synthetic peptide directed towards the C-terminal region of Mouse Rap1a. Synthetic peptide located within the following region: GQNLARQWCNCAFLESSAKSKINVNEIFYDLVRQINRKTPVEKKKPKKKS
Formulation:	Liquid. Purified antibody supplied in 1x PBS buffer with 0.09% (w/v) sodium azide and 2% sucrose. <i>Note that this product is shipped as lyophilized powder to China customers.</i>
Conjugation:	Unconjugated
Storage:	Store at -20°C as received.
Stability:	Stable for 12 months from date of receipt.
Predicted Protein Size:	20 kDa
Gene Name:	RAP1A, member of RAS oncogene family
Database Link:	<a href="#">NP_001010935</a> <a href="#">Entrez Gene 109905 Mouse P62834</a>
Background:	Rap1a induces morphological reversion of a cell line transformed by a Ras oncogene. Rap1a counteracts the mitogenic function of Ras, at least partly because it can interact with Ras GAPs and RAF in a competitive manner.
Synonyms:	C21KG; G-22K; KREV-1; KREV1; RAP1; SMGP21
Note:	Immunogen Sequence Homology: Dog: 100%; Pig: 100%; Rat: 100%; Goat: 100%; Horse: 100%; Human: 100%; Mouse: 100%; Bovine: 100%; Rabbit: 100%; Zebrafish: 100%; Guinea pig: 100%
Protein Families:	Druggable Genome



[View online »](#)

**Protein Pathways:**

Chemokine signaling pathway, Focal adhesion, Leukocyte transendothelial migration, Long-term potentiation, MAPK signaling pathway, Neurotrophin signaling pathway, Renal cell carcinoma

**Product images:**

Host: Rabbit; Target Name: Rap1a; Sample Tissue: Mouse Testis lysates; Antibody Dilution: 1.0 ug/ml