

## Product datasheet for **TA343310**

### IL13 receptor alpha 1 (IL13RA1) Rabbit Polyclonal Antibody

#### Product data:

Product Type:	Primary Antibodies
Applications:	WB
Recommended Dilution:	WB
Reactivity:	Human, Mouse
Host:	Rabbit
Isotype:	IgG
Clonality:	Polyclonal
Immunogen:	The immunogen for anti-IL13RA1 antibody is: synthetic peptide directed towards the N-terminal region of IL13RA1. Synthetic peptide located within the following region: VSVENLCTVIWTWNPPEGASSNCSLWYFSHFGDKQDKKIAPETRRSIEVP
Formulation:	Liquid. Purified antibody supplied in 1x PBS buffer with 0.09% (w/v) sodium azide and 2% sucrose. <i>Note that this product is shipped as lyophilized powder to China customers.</i>
Conjugation:	Unconjugated
Storage:	Store at -20°C as received.
Stability:	Stable for 12 months from date of receipt.
Predicted Protein Size:	47 kDa
Gene Name:	interleukin 13 receptor subunit alpha 1
Database Link:	<a href="#">NP_001551</a> <a href="#">Entrez Gene 16164 Mouse</a> <a href="#">Entrez Gene 3597 Human</a> <a href="#">P78552</a>
Background:	The protein encoded by this gene is a subunit of the interleukin 13 receptor. This subunit forms a receptor complex with IL4 receptor alpha, a subunit shared by IL13 and IL4 receptors. This subunit serves as a primary IL13-binding subunit of the IL13 receptor, and may also be a component of IL4 receptors. This protein has been shown to bind tyrosine kinase TYK2, and thus may mediate the signaling processes that lead to the activation of JAK1, STAT3 and STAT6 induced by IL13 and IL4.
Synonyms:	CD213A1; CT19; IL-13Ra; NR4



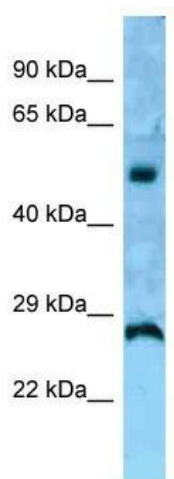
[View online »](#)

**Note:** Immunogen Sequence Homology: Human: 100%; Rabbit: 100%; Horse: 92%; Sheep: 92%; Bovine: 92%; Rat: 86%; Dog: 85%; Pig: 85%; Mouse: 85%; Guinea pig

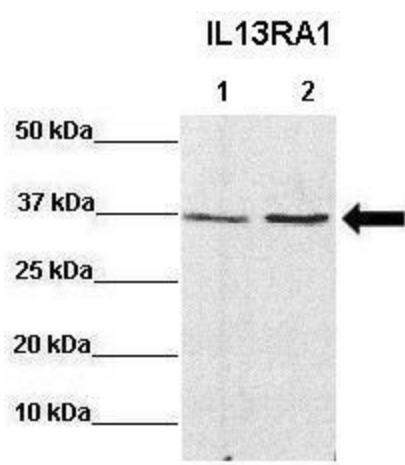
**Protein Families:** Druggable Genome, Transmembrane

**Protein Pathways:** Cytokine-cytokine receptor interaction, Jak-STAT signaling pathway

## Product images:



WB Suggested Anti-IL13RA1 Antibody; Titration: 1.0 ug/ml; Positive Control: Fetal kidney



Sample Type : Lane 1: 60ug mouse CT26 lysate  
Lane 2: 60ug mouse MC38 lysate Primary Antibody Dilution : 1:1000 Secondary Antibody: Anti-rabbit-HRP Secondary Antibody Dilution: 1:5000 Color/Signal Descriptions: IL13RA1 Gene Name: Miranda A. Hallett, Vander