

## Product datasheet for **TA343308**

### Solute carrier family 22 member 5 (SLC22A5) Rabbit Polyclonal Antibody

#### Product data:

Product Type:	Primary Antibodies
Applications:	WB
Recommended Dilution:	WB
Reactivity:	Human
Host:	Rabbit
Isotype:	IgG
Clonality:	Polyclonal
Immunogen:	The immunogen for anti-SLC22A5 antibody is: synthetic peptide directed towards the C-terminal region of SLC22A5. Synthetic peptide located within the following region: TLF LPESFGT PLPDTIDQMLRVKGMKHKRTPSHRMLKDGQERPTILKST
Formulation:	Liquid. Purified antibody supplied in 1x PBS buffer with 0.09% (w/v) sodium azide and 2% sucrose.
Conjugation:	Unconjugated
Storage:	Store at -20°C as received.
Stability:	Stable for 12 months from date of receipt.
Predicted Protein Size:	61 kDa
Gene Name:	solute carrier family 22 member 5
Database Link:	<a href="#">NP_003051</a> <a href="#">Entrez Gene 6584 Human</a> <a href="#">O76082</a>
Background:	Polyspecific organic cation transporters in the liver, kidney, intestine, and other organs are critical for elimination of many endogenous small organic cations as well as a wide array of drugs and environmental toxins. The encoded protein is a plasma integral membrane protein which functions both as an organic cation transporter and as a sodium-dependent high affinity carnitine transporter. The encoded protein is involved in the active cellular uptake of carnitine. Mutations in this gene are the cause of systemic primary carnitine deficiency (CDSP), an autosomal recessive disorder manifested early in life by hypoketotic hypoglycemia and acute metabolic decompensation, and later in life by skeletal myopathy or cardiomyopathy.



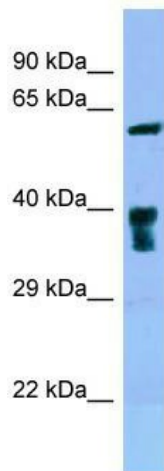
[View online »](#)

**Synonyms:** CDSP; OCTN2

**Note:** Immunogen Sequence Homology: Human: 100%; Rat: 86%; Horse: 86%; Pig: 79%; Bovine: 79%; Guinea pig: 79%; Mouse

**Protein Families:** Transmembrane

### Product images:



WB Suggested Anti-SLC22A5 Antibody; Titration: 1.0 ug/ml; Positive Control: Hela Whole Cell  
SLC22A5 is supported by BioGPS gene expression data to be expressed in HeLa