

Product datasheet for **TA343307**

TCP1 beta (CCT2) Rabbit Polyclonal Antibody

Product data:

Product Type:	Primary Antibodies
Applications:	WB
Recommended Dilution:	WB
Reactivity:	Human, Mouse
Host:	Rabbit
Isotype:	IgG
Clonality:	Polyclonal
Immunogen:	The immunogen for anti-CCT2 antibody is: synthetic peptide directed towards the middle region of CCT2. Synthetic peptide located within the following region: RVDSTAKVAEIEHAEKEKMKVERILKHGINCFINRQLIYNYPEQLFGA
Formulation:	Liquid. Purified antibody supplied in 1x PBS buffer with 0.09% (w/v) sodium azide and 2% sucrose. <i>Note that this product is shipped as lyophilized powder to China customers.</i>
Conjugation:	Unconjugated
Storage:	Store at -20°C as received.
Stability:	Stable for 12 months from date of receipt.
Predicted Protein Size:	59 kDa
Gene Name:	chaperonin containing TCP1 subunit 2
Database Link:	NP_006422 Entrez Gene 12461 Mouse Entrez Gene 10576 Human P78371
Background:	The protein encoded by this gene is a molecular chaperone that is a member of the chaperonin containing TCP1 complex (CCT), also known as the TCP1 ring complex (TRiC). This complex consists of two identical stacked rings, each containing eight different proteins. Unfolded polypeptides enter the central cavity of the complex and are folded in an ATP-dependent manner. The complex folds various proteins, including actin and tubulin.
Synonyms:	99D8.1; CCT-beta; CCTB; HEL-S-100n; PRO1633; TCP-1-beta

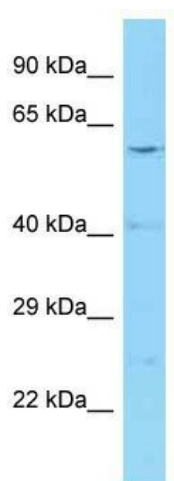


[View online »](#)

Note: Immunogen Sequence Homology: Dog: 100%; Pig: 100%; Rat: 100%; Horse: 100%; Human: 100%; Mouse: 100%; Bovine: 100%; Rabbit: 100%; Guinea pig: 100%; Zebrafish: 93%; Yeast: 85%

Protein Families: Druggable Genome

Product images:



WB Suggested Anti-CCT2 Antibody; Titration: 1.0 ug/ml; Positive Control: MCF7 Whole Cell CCT2 is strongly supported by BioGPS gene expression data to be expressed in Human MCF7 cells