

Product datasheet for **TA343306**

TAZ Rabbit Polyclonal Antibody

Product data:

| | |
|-------------------------|---|
| Product Type: | Primary Antibodies |
| Applications: | WB |
| Recommended Dilution: | WB |
| Reactivity: | Human, Mouse |
| Host: | Rabbit |
| Isotype: | IgG |
| Clonality: | Polyclonal |
| Immunogen: | The immunogen for anti-TAZ antibody is: synthetic peptide directed towards the C-terminal region of TAZ. Synthetic peptide located within the following region: PNSPPYFPRFGQKITVLIGKPFSA LPVLERLRAENKSAVEMRKALTDIFIQ |
| Formulation: | Liquid. Purified antibody supplied in 1x PBS buffer with 0.09% (w/v) sodium azide and 2% sucrose. <i>Note that this product is shipped as lyophilized powder to China customers.</i> |
| Conjugation: | Unconjugated |
| Storage: | Store at -20°C as received. |
| Stability: | Stable for 12 months from date of receipt. |
| Predicted Protein Size: | 28 kDa |
| Gene Name: | tafazzin |
| Database Link: | NP_851828 Entrez Gene 66826 Mouse Entrez Gene 6901 Human Q16635 |



[View online »](#)

Background:

This gene encodes a protein that is expressed at high levels in cardiac and skeletal muscle. Mutations in this gene have been associated with a number of clinical disorders including Barth syndrome, dilated cardiomyopathy (DCM), hypertrophic DCM, endocardial fibroelastosis, and left ventricular noncompaction (LVNC). Multiple transcript variants encoding different isoforms have been described. A long form and a short form of each of these isoforms is produced; the short form lacks a hydrophobic leader sequence and may exist as a cytoplasmic protein rather than being membrane-bound. Other alternatively spliced transcripts have been described but the full-length nature of all these transcripts is not known.

Synonyms:

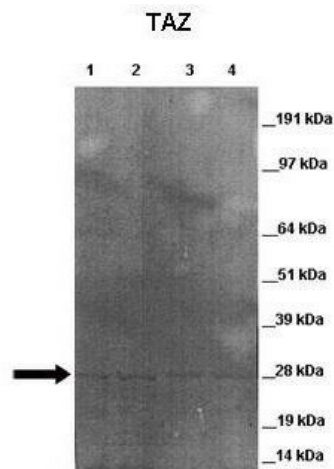
BTHS; CMD3A; EFE; EFE2; G4.5; LVNCX; Taz1

Note:

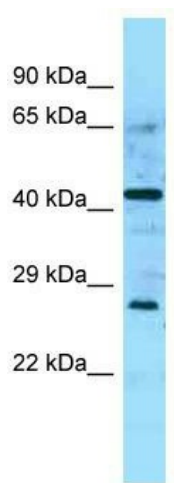
Immunogen Sequence Homology: Dog: 100%; Rat: 100%; Horse: 100%; Human: 100%; Mouse: 100%; Bovine: 100%; Rabbit: 100%; Pig: 93%; Guinea pig: 93%

Protein Families:

ES Cell Differentiation/IPS, Transmembrane

Product images:

Lanes: Lane 1: 20ug mouse cardiac mitochondria lysate; Lane 2: 20ug mouse cardiac mitochondria lysate; Lane 3: 20ug mouse cardiac mitochondria lysate; Lane 4: 20ug mouse cardiac mitochondria lysate; Primary Antibody Dilution: ; 1:500; Secondary Antibody:



WB Suggested Anti-TAZ Antibody; Titration: 1.0 ug/ml; Positive Control: Placenta