

Product datasheet for **TA343305**

SRMS Rabbit Polyclonal Antibody

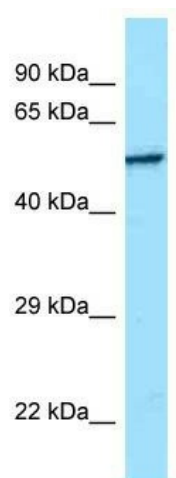
Product data:

Product Type:	Primary Antibodies
Applications:	WB
Recommended Dilution:	WB
Reactivity:	Human
Host:	Rabbit
Isotype:	IgG
Clonality:	Polyclonal
Immunogen:	The immunogen for anti-SRMS antibody is: synthetic peptide directed towards the C-terminal region of SRMS. Synthetic peptide located within the following region: QQIMRGYRLPRPAACPAEVYVLMLECWSSPEERPSFATLREKLHAIHRC
Formulation:	Liquid. Purified antibody supplied in 1x PBS buffer with 0.09% (w/v) sodium azide and 2% sucrose. <i>Note that this product is shipped as lyophilized powder to China customers.</i>
Conjugation:	Unconjugated
Storage:	Store at -20°C as received.
Stability:	Stable for 12 months from date of receipt.
Predicted Protein Size:	54 kDa
Gene Name:	src-related kinase lacking C-terminal regulatory tyrosine and N-terminal myristylation sites
Database Link:	NP_543013 Entrez Gene 6725 Human Q9H3Y6
Background:	SRMS may be involved in proliferation or differentiation of keratinocytes in the skin.
Synonyms:	C20orf148; dj697K14.1; PTK70; SRM
Note:	Immunogen Sequence Homology: Human: 100%; Dog: 82%; Pig: 82%; Horse: 82%; Bovine: 82%; Rat: 79%; Zebrafish: 75%
Protein Families:	Druggable Genome, Protein Kinase



[View online »](#)

Product images:



WB Suggested Anti-SRMS Antibody; Titration: 1.0 ug/ml; Positive Control: MCF7 Whole Cell