

Product datasheet for **TA343304**

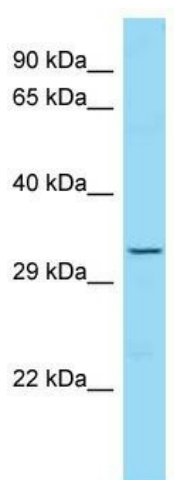
Trophinin (TRO) Rabbit Polyclonal Antibody

Product data:

Product Type:	Primary Antibodies
Applications:	WB
Recommended Dilution:	WB
Reactivity:	Human
Host:	Rabbit
Isotype:	IgG
Clonality:	Polyclonal
Immunogen:	The immunogen for anti-TRO antibody is: synthetic peptide directed towards the C-terminal region of Human TRO. Synthetic peptide located within the following region: EAEARAEIYSPCLQIPLINCSSPSHGAKVHPWNLCPHSSQGSYGQSAEGV
Formulation:	Liquid. Purified antibody supplied in 1x PBS buffer with 0.09% (w/v) sodium azide and 2% sucrose.
Purification:	Affinity Purified
Conjugation:	Unconjugated
Storage:	Store at -20°C as received.
Stability:	Stable for 12 months from date of receipt.
Predicted Protein Size:	33 kDa
Gene Name:	trophinin
Database Link:	NP_808225 Entrez Gene 7216 Human Q12816
Background:	This gene encodes a membrane protein that mediates cell adhesion between trophoblastic cells and the epithelial cells of the endometrium. The encoded protein participates in cell signalling during embryo implantation, and may also be involved in cancer formation. This gene is located near several other closely related genes on chromosome X. Alternative splicing results in multiple transcript variants.
Synonyms:	MAGE-d3; MAGED3
Note:	Immunogen Sequence Homology: Human: 100%



[View online »](#)

Product images:

Host: Rabbit; Target Name: TRO; Sample Tissue: HT1080 Whole cell lysates; Antibody Dilution: 1.0 ug/ml