

Product datasheet for **TA343303**

EPM2A Rabbit Polyclonal Antibody

Product data:

Product Type:	Primary Antibodies
Applications:	WB
Recommended Dilution:	WB
Reactivity:	Human
Host:	Rabbit
Isotype:	IgG
Clonality:	Polyclonal
Immunogen:	The immunogen for anti-EPM2A antibody is: synthetic peptide directed towards the N-terminal region of Human EPM2A. Synthetic peptide located within the following region: PGRVDTFWYKFLKREPGGELSWEGNGPHHDCCTYNENNLVDGVYCLPIG
Formulation:	Liquid. Purified antibody supplied in 1x PBS buffer with 0.09% (w/v) sodium azide and 2% sucrose. <i>Note that this product is shipped as lyophilized powder to China customers.</i>
Purification:	Affinity Purified
Conjugation:	Unconjugated
Storage:	Store at -20°C as received.
Stability:	Stable for 12 months from date of receipt.
Predicted Protein Size:	34 kDa
Gene Name:	epilepsy, progressive myoclonus type 2A, Lafora disease (laforin)
Database Link:	NP_005661 Entrez Gene 7957 Human O95278
Background:	This gene encodes a dual-specificity phosphatase that associates with polyribosomes. The encoded protein may be involved in the regulation of glycogen metabolism. Mutations in this gene have been associated with myoclonic epilepsy of Lafora. Alternative splicing results in multiple transcript variants.
Synonyms:	EPM2; MELF

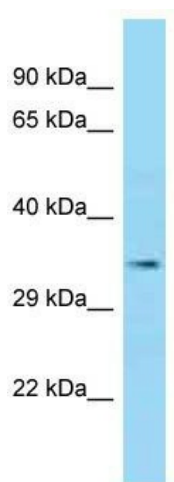


[View online »](#)

Note: Immunogen Sequence Homology: Human: 100%; Bovine: 100%; Dog: 93%; Rabbit: 93%; Pig: 86%; Rat: 86%; Mouse: 86%

Protein Families: Druggable Genome, Phosphatase

Product images:



Host: Rabbit; Target Name: EPM2A; Sample Tissue: THP-1 Whole Cell lysates; Antibody Dilution: 1.0 ug/ml