

Product datasheet for **TA343302**

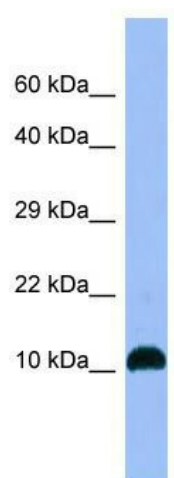
NPB Rabbit Polyclonal Antibody

Product data:

Product Type:	Primary Antibodies
Applications:	WB
Recommended Dilution:	WB
Reactivity:	Human
Host:	Rabbit
Isotype:	IgG
Clonality:	Polyclonal
Immunogen:	The immunogen for anti-NPB antibody is: synthetic peptide directed towards the C-terminal region of NPB. Synthetic peptide located within the following region: PPGGAGASPELQLHPRLRSLAVCVQDVAPNLQRCERLPDGRGTYQCKANV
Formulation:	Liquid. Purified antibody supplied in 1x PBS buffer with 0.09% (w/v) sodium azide and 2% sucrose. <i>Note that this product is shipped as lyophilized powder to China customers.</i>
Conjugation:	Unconjugated
Storage:	Store at -20°C as received.
Stability:	Stable for 12 months from date of receipt.
Predicted Protein Size:	14 kDa
Gene Name:	neuropeptide B
Database Link:	NP_683694 Entrez Gene 256933 Human Q8NG41
Background:	Neuropeptide B (NPB) is an endogenous peptide ligand for G protein-coupled receptor-7.
Synonyms:	L7; PPL7; PPNPB
Note:	Immunogen Sequence Homology: Human: 100%; Rat: 90%; Dog: 79%; Bovine: 79%
Protein Families:	Secreted Protein, Transmembrane



[View online »](#)

Product images:

WB Suggested Anti-NPB Antibody; Titration: 1.0 ug/ml; Positive Control: Fetal Brain