

Product datasheet for **TA343299**

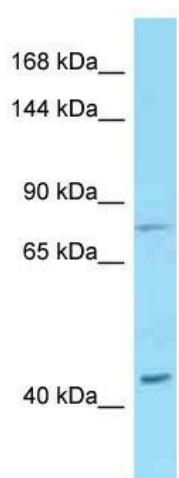
Desmoglein 1 (DSG1) Rabbit Polyclonal Antibody

Product data:

Product Type:	Primary Antibodies
Applications:	WB
Recommended Dilution:	WB
Reactivity:	Human
Host:	Rabbit
Isotype:	IgG
Clonality:	Polyclonal
Immunogen:	The immunogen for anti-DSG1 antibody is: synthetic peptide directed towards the C-terminal region of Human DSG1. Synthetic peptide located within the following region: GGIGLSSLGGTASIGHMRSSSDHFNQTIGSASPSTARSRITKYSTVQYS
Formulation:	Liquid. Purified antibody supplied in 1x PBS buffer with 0.09% (w/v) sodium azide and 2% sucrose. <i>Note that this product is shipped as lyophilized powder to China customers.</i>
Purification:	Affinity Purified
Conjugation:	Unconjugated
Storage:	Store at -20°C as received.
Stability:	Stable for 12 months from date of receipt.
Predicted Protein Size:	44 kDa
Gene Name:	desmoglein 1
Database Link:	NP_001933 Entrez Gene 1828 Human Q02413
Background:	The function of this protein remains unknown.
Synonyms:	CDHF4; DG1; DSG; EPKHE; EPKHIA; PPKS1; SPPK1
Note:	Immunogen Sequence Homology: Dog: 100%; Human: 100%; Rat: 93%; Horse: 93%; Mouse: 93%; Rabbit: 93%; Pig: 86%; Bovine: 86%; Guinea pig: 86%
Protein Families:	Druggable Genome



[View online »](#)

Product images:

Host: Rabbit; Target Name: DSG1; Sample Tissue: U937 Whole Cell lysates; Antibody Dilution: 1.0 ug/ml