

Product datasheet for **TA343298**

SMN1 Rabbit Polyclonal Antibody

Product data:

Product Type:	Primary Antibodies
Applications:	WB
Recommended Dilution:	WB
Reactivity:	Human
Host:	Rabbit
Isotype:	IgG
Clonality:	Polyclonal
Immunogen:	The immunogen for anti-SMN1 antibody is: synthetic peptide directed towards the C-terminal region of SMN1. Synthetic peptide located within the following region: PPPPPICPDSLDDADALGSMLISWYMSGYHTGYMGRQNQKEGRCSHSL
Formulation:	Liquid. Purified antibody supplied in 1x PBS buffer with 0.09% (w/v) sodium azide and 2% sucrose. <i>Note that this product is shipped as lyophilized powder to China customers.</i>
Conjugation:	Unconjugated
Storage:	Store at -20°C as received.
Stability:	Stable for 12 months from date of receipt.
Predicted Protein Size:	28 kDa
Gene Name:	survival of motor neuron 1, telomeric
Database Link:	NP_075012 Entrez Gene 6606 Human Q16637
Background:	SMN1 localizes to both the cytoplasm and the nucleus. Within the nucleus, the protein localizes to subnuclear bodies called gems which are found near coiled bodies containing high concentrations of small ribonucleoproteins (snRNPs). This protein forms heteromeric complexes with proteins such as SIP1 and GEMIN4, and also interacts with several proteins known to be involved in the biogenesis of snRNPs, such as hnRNP U protein and the small nucleolar RNA binding protein.
Synonyms:	BCD541; GEMIN1; SMA; SMA1; SMA2; SMA3; SMA4; SMA@; SMN; SMNT; T-BCD541; TDRD16A

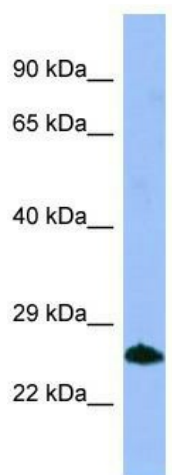


[View online »](#)

Note: Immunogen Sequence Homology: Pig: 100%; Human: 100%; Dog: 92%; Rat: 92%; Horse: 92%; Guinea pig: 92%; Mouse: 85%; Rabbit: 85%; Bovine

Protein Families: Druggable Genome, Stem cell - Pluripotency

Product images:



WB Suggested Anti-SMN1 Antibody; Titration: 1.0 ug/ml; Positive Control: Fetal Heart