

Product datasheet for **TA343296**

SOS1 Rabbit Polyclonal Antibody

Product data:

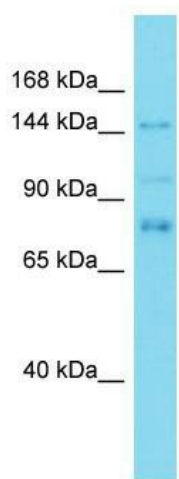
Product Type:	Primary Antibodies
Applications:	WB
Recommended Dilution:	WB
Reactivity:	Mouse
Host:	Rabbit
Isotype:	IgG
Clonality:	Polyclonal
Immunogen:	The immunogen for anti-Sos1 antibody is: synthetic peptide directed towards the N-terminal region of Mouse Sos1. Synthetic peptide located within the following region: YFELLKQLEEKSEDQEDKECMKQAITALLNVQSGMEKICSKSLAKRRLSE
Formulation:	Liquid. Purified antibody supplied in 1x PBS buffer with 0.09% (w/v) sodium azide and 2% sucrose. <i>Note that this product is shipped as lyophilized powder to China customers.</i>
Conjugation:	Unconjugated
Storage:	Store at -20°C as received.
Stability:	Stable for 12 months from date of receipt.
Predicted Protein Size:	151 kDa
Gene Name:	SOS Ras/Rac guanine nucleotide exchange factor 1
Database Link:	NP_005624 Entrez Gene 20662 Mouse Q07889
Background:	Sos1 promotes the exchange of Ras-bound GDP by GTP.
Synonyms:	GF1; GGF1; GINGF; HGF; NS4
Note:	Immunogen Sequence Homology: Dog: 100%; Pig: 100%; Rat: 100%; Horse: 100%; Human: 100%; Mouse: 100%; Bovine: 100%; Rabbit: 100%; Guinea pig: 100%
Protein Families:	Druggable Genome



[View online »](#)

Protein Pathways:

Acute myeloid leukemia, B cell receptor signaling pathway, Chemokine signaling pathway, Chronic myeloid leukemia, Colorectal cancer, Dorso-ventral axis formation, Endometrial cancer, ErbB signaling pathway, Fc epsilon RI signaling pathway, Focal adhesion, Gap junction, Glioma, GnRH signaling pathway, Insulin signaling pathway, Jak-STAT signaling pathway, MAPK signaling pathway, Natural killer cell mediated cytotoxicity, Neurotrophin signaling pathway, Non-small cell lung cancer, Pathways in cancer, Prostate cancer, Regulation of actin cytoskeleton, Renal cell carcinoma, T cell receptor signaling pathway

Product images:

Host: Rabbit; Target Name: Sos1; Sample Tissue: Mouse Spleen lysates; Antibody Dilution: 1.0 ug/ml