

Product datasheet for **TA343291**

Xanthine Oxidase (XDH) Rabbit Polyclonal Antibody

Product data:

Product Type:	Primary Antibodies
Applications:	WB
Recommended Dilution:	WB
Reactivity:	Rat
Host:	Rabbit
Isotype:	IgG
Clonality:	Polyclonal
Immunogen:	The immunogen for anti-Xdh antibody is: synthetic peptide directed towards the N-terminal region of Rat Xdh. Synthetic peptide located within the following region: EFFSAFKQASRREDDIAKVTSGMRVLFKPGTIEVQELSLCFGGMADRTIS
Formulation:	Liquid. Purified antibody supplied in 1x PBS buffer with 0.09% (w/v) sodium azide and 2% sucrose. <i>Note that this product is shipped as lyophilized powder to China customers.</i>
Purification:	Affinity Purified
Conjugation:	Unconjugated
Storage:	Store at -20°C as received.
Stability:	Stable for 12 months from date of receipt.
Predicted Protein Size:	146 kDa
Gene Name:	xanthine dehydrogenase
Database Link:	NP_000370 Entrez Gene 497811 Rat P47989
Background:	Xdh catalyzes the conversion of xanthine + NAD ⁺ + H ₂ O to urate + NADH + H ⁺ ; It may be involved in response to aluminium and aluminium toxicity.
Synonyms:	XAN1; XO; XOR
Note:	Immunogen Sequence Homology: Dog: 100%; Pig: 100%; Rat: 100%; Goat: 100%; Horse: 100%; Human: 100%; Mouse: 100%; Bovine: 100%; Rabbit: 100%; Guinea pig: 100%

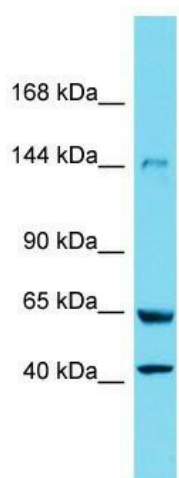


[View online »](#)

Protein Families: Druggable Genome

Protein Pathways: Caffeine metabolism, Drug metabolism - other enzymes, Metabolic pathways, Purine metabolism

Product images:



Host: Rabbit; Target Name: Xdh; Sample Tissue: Rat Lung lysates; Antibody Dilution: 1.0 ug/ml