

## Product datasheet for **TA343290**

### NAGA Rabbit Polyclonal Antibody

#### Product data:

Product Type:	Primary Antibodies
Applications:	WB
Recommended Dilution:	WB
Reactivity:	Human
Host:	Rabbit
Isotype:	IgG
Clonality:	Polyclonal
Immunogen:	The immunogen for anti-NAGA antibody is: synthetic peptide directed towards the middle region of Human NAGA. Synthetic peptide located within the following region: CFSTPEERAQGYPKMAAALNATGRPIAFSCSWPAYEGGLPPRVNYSLLAD
Formulation:	Liquid. Purified antibody supplied in 1x PBS buffer with 0.09% (w/v) sodium azide and 2% sucrose. <i>Note that this product is shipped as lyophilized powder to China customers.</i>
Conjugation:	Unconjugated
Storage:	Store at -20°C as received.
Stability:	Stable for 12 months from date of receipt.
Predicted Protein Size:	45 kDa
Gene Name:	alpha-N-acetylgalactosaminidase
Database Link:	<a href="#">NP_000253</a> <a href="#">Entrez Gene 4668 Human P17050</a>
Background:	NAGA encodes the lysosomal enzyme alpha-N-acetylgalactosaminidase, which cleaves alpha-N-acetylgalactosaminyl moieties from glycoconjugates. Mutations in NAGA have been identified as the cause of Schindler disease types I and II (type II also known as Kanzaki disease).
Synonyms:	D22S674; GALB
Note:	Immunogen Sequence Homology: Human: 100%; Horse: 93%; Dog: 86%; Rabbit: 86%; Pig: 79%; Rat: 79%; Bovine: 79%

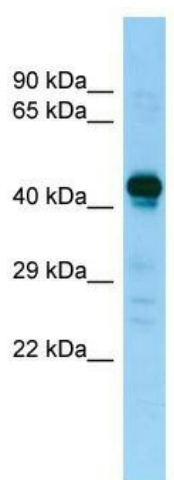


[View online »](#)

Protein Families: Druggable Genome

Protein Pathways: Glycosphingolipid biosynthesis - globo series, Lysosome

### Product images:



Host: Rabbit; Target Name: NAGA; Sample Tissue: Placenta lysates; Antibody Dilution: 1.0 ug/ml