

Product datasheet for **TA343288**

ARHGEF1 Rabbit Polyclonal Antibody

Product data:

Product Type:	Primary Antibodies
Applications:	WB
Recommended Dilution:	WB
Reactivity:	Human
Host:	Rabbit
Isotype:	IgG
Clonality:	Polyclonal
Immunogen:	The immunogen for anti-ARHGEF1 antibody is: synthetic peptide directed towards the N-terminal region of Human ARHGEF1. Synthetic peptide located within the following region: SAAVNVAIGLYMRHLGVRTKSGDKKSGRNFFRKKVMGNRRSDEPAKTKKG
Formulation:	Liquid. Purified antibody supplied in 1x PBS buffer with 0.09% (w/v) sodium azide and 2% sucrose. <i>Note that this product is shipped as lyophilized powder to China customers.</i>
Conjugation:	Unconjugated
Storage:	Store at -20°C as received.
Stability:	Stable for 12 months from date of receipt.
Predicted Protein Size:	102 kDa
Gene Name:	Rho guanine nucleotide exchange factor 1
Database Link:	NP_945353 Entrez Gene 9138 Human Q92888
Background:	Rho GTPases play a fundamental role in numerous cellular processes that are initiated by extracellular stimuli that work through G protein coupled receptors. The encoded protein may form complex with G proteins and stimulate Rho-dependent signals. Multiple alternatively spliced transcript variants have been found for this gene, but the full-length nature of some variants has not been defined.
Synonyms:	GEF1; LBCL2; LSC; P115-RHOGEF; SUB1.5

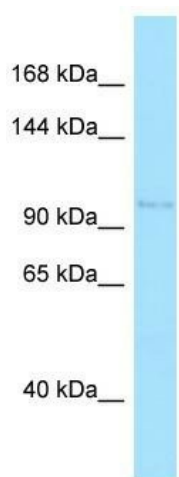


[View online »](#)

Note: Immunogen Sequence Homology: Human: 100%; Dog: 93%; Rat: 93%; Mouse: 93%; Bovine: 93%; Pig: 86%; Horse: 86%

Protein Pathways: Regulation of actin cytoskeleton, Vascular smooth muscle contraction

Product images:



WB Suggested Anti-ARHGEF1 Antibody; Titration: 1.0 ug/ml; Positive Control: Jurkat Whole Cell
ARHGEF1 is supported by BioGPS gene expression data to be expressed in Jurkat