

## Product datasheet for **TA343287**

### NLN Rabbit Polyclonal Antibody

#### Product data:

Product Type:	Primary Antibodies
Applications:	WB
Recommended Dilution:	WB
Reactivity:	Human
Host:	Rabbit
Isotype:	IgG
Clonality:	Polyclonal
Immunogen:	The immunogen for anti-NLN antibody is: synthetic peptide directed towards the N-terminal region of NLN. Synthetic peptide located within the following region: CLQLADVEVKYIVERTMLDFPQHVSSDKEVRAASTEADKRLSRFDIEMS
Formulation:	Liquid. Purified antibody supplied in 1x PBS buffer with 0.09% (w/v) sodium azide and 2% sucrose. <i>Note that this product is shipped as lyophilized powder to China customers.</i>
Conjugation:	Unconjugated
Storage:	Store at -20°C as received.
Stability:	Stable for 12 months from date of receipt.
Predicted Protein Size:	77 kDa
Gene Name:	neurolysin
Database Link:	<a href="#">NP_065777</a> <a href="#">Entrez Gene 57486 Human</a> <a href="#">Q9BYT8</a>
Background:	This gene encodes a member of the metallopeptidase M3 protein family that cleaves neurotensin at the Pro10-Tyr11 bond, leading to the formation of neurotensin(1-10) and neurotensin(11-13). The encoded protein is likely involved in the termination of the neurotensinergic signal in the central nervous system and in the gastrointestinal tract.
Synonyms:	AGTBP; EP24.16; MEP; MOP
Note:	Immunogen Sequence Homology: Dog: 100%; Pig: 100%; Rat: 100%; Horse: 100%; Human: 100%; Bovine: 100%; Guinea pig: 100%; Mouse: 93%; Rabbit: 93%; Zebrafish: 92%

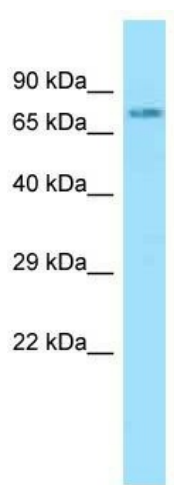


[View online »](#)

Protein Families: Druggable Genome, Protease

Protein Pathways: Renin-angiotensin system

### Product images:



WB Suggested Anti-NLN Antibody; Titration: 1.0 ug/ml; Positive Control: Placenta