

## Product datasheet for **TA343284**

### KEL Rabbit Polyclonal Antibody

#### Product data:

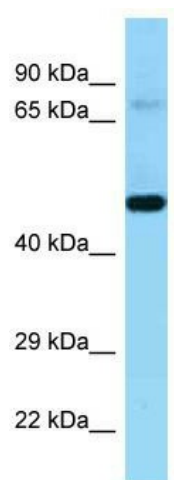
Product Type:	Primary Antibodies
Applications:	WB
Recommended Dilution:	WB
Reactivity:	Human
Host:	Rabbit
Isotype:	IgG
Clonality:	Polyclonal
Immunogen:	The immunogen for anti-KEL antibody is: synthetic peptide directed towards the N-terminal region of Human KEL. Synthetic peptide located within the following region: PCETSVCLDLRDHYLASGNTSVAPCTDFFSFACGRAKETNNSFQELATKN
Formulation:	Liquid. Purified antibody supplied in 1x PBS buffer with 0.09% (w/v) sodium azide and 2% sucrose. <i>Note that this product is shipped as lyophilized powder to China customers.</i>
Purification:	Affinity Purified
Conjugation:	Unconjugated
Storage:	Store at -20°C as received.
Stability:	Stable for 12 months from date of receipt.
Predicted Protein Size:	82 kDa
Gene Name:	Kell blood group, metallo-endopeptidase
Database Link:	<a href="#">NP_000411</a> <a href="#">Entrez Gene 3792 Human</a> <a href="#">P23276</a>
Background:	This gene encodes a type II transmembrane glycoprotein that is the highly polymorphic Kell blood group antigen. The Kell glycoprotein links via a single disulfide bond to the XK membrane protein that carries the Kx antigen. The encoded protein contains sequence and structural similarity to members of the neprilysin (M13) family of zinc endopeptidases.
Synonyms:	CD238; ECE3
Note:	Immunogen Sequence Homology: Human: 100%



[View online »](#)

Protein Families: Druggable Genome, Protease, Transmembrane

### Product images:



Host: Rabbit; Target Name: KEL; Sample Tissue: 721\_B Whole Cell lysates; Antibody Dilution: 1.0 ug/ml