

Product datasheet for **TA343283**

MC1 Receptor (MC1R) Rabbit Polyclonal Antibody

Product data:

Product Type:	Primary Antibodies
Applications:	WB
Recommended Dilution:	WB
Reactivity:	Human
Host:	Rabbit
Isotype:	IgG
Clonality:	Polyclonal
Immunogen:	The immunogen for anti-MC1R antibody is: synthetic peptide directed towards the C-terminal region of MC1R. Synthetic peptide located within the following region: CPEHPTCGCIFKNFNFLALAIICNAIIDPLIYAFHSQELRRTLKEVLTC
Formulation:	Liquid. Purified antibody supplied in 1x PBS buffer with 0.09% (w/v) sodium azide and 2% sucrose. <i>Note that this product is shipped as lyophilized powder to China customers.</i>
Conjugation:	Unconjugated
Storage:	Store at -20°C as received.
Stability:	Stable for 12 months from date of receipt.
Predicted Protein Size:	35 kDa
Gene Name:	melanocortin 1 receptor
Database Link:	NP_002377 Entrez Gene 4157 Human Q01726



[View online »](#)

Background:

This intronless gene encodes the receptor protein for melanocyte-stimulating hormone (MSH). The encoded protein, a seven pass transmembrane G protein coupled receptor, controls melanogenesis. Two types of melanin exist: red pheomelanin and black eumelanin. Gene mutations that lead to a loss in function are associated with increased pheomelanin production, which leads to lighter skin and hair color. Eumelanin is photoprotective but pheomelanin may contribute to UV-induced skin damage by generating free radicals upon UV radiation. Binding of MSH to its receptor activates the receptor and stimulates eumelanin synthesis. This receptor is a major determining factor in sun sensitivity and is a genetic risk factor for melanoma and non-melanoma skin cancer. Over 30 variant alleles have been identified which correlate with skin and hair color, providing evidence that this gene is an important component in determining normal human pigment variation.

Synonyms:

CMM5; MSH-R; SHEP2

Note:

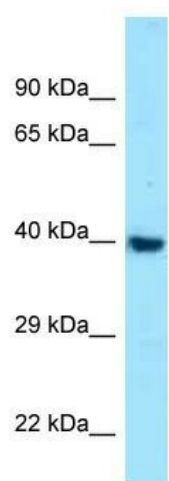
Immunogen Sequence Homology: Human: 100%; Pig: 93%; Rat: 93%; Rabbit: 93%; Mouse: 86%

Protein Families:

Druggable Genome, GPCR, Transmembrane

Protein Pathways:

Melanogenesis, Neuroactive ligand-receptor interaction

Product images:

WB Suggested Anti-MC1R Antibody; Titration: 1.0 ug/ml; Positive Control: HepG2 Whole Cell