

Product datasheet for **TA343282**

Syndecan 3 (SDC3) Rabbit Polyclonal Antibody

Product data:

Product Type:	Primary Antibodies
Applications:	WB
Recommended Dilution:	WB
Reactivity:	Human
Host:	Rabbit
Isotype:	IgG
Clonality:	Polyclonal
Immunogen:	The immunogen for anti-SDC3 antibody is: synthetic peptide directed towards the C-terminal region of Human SDC3. Synthetic peptide located within the following region: VGGVVGALFAAFLVTLIIYRMKKKDEGSYTLLEPKQASVTYQKPKDKQEEF
Formulation:	Liquid. Purified antibody supplied in 1x PBS buffer with 0.09% (w/v) sodium azide and 2% sucrose. <i>Note that this product is shipped as lyophilized powder to China customers.</i>
Purification:	Affinity Purified
Conjugation:	Unconjugated
Storage:	Store at -20°C as received.
Stability:	Stable for 12 months from date of receipt.
Predicted Protein Size:	48 kDa
Gene Name:	syndecan 3
Database Link:	NP_055469 Entrez Gene 9672 Human O75056
Background:	The protein encoded by this gene belongs to the syndecan proteoglycan family. It may play a role in the organization of cell shape by affecting the actin cytoskeleton, possibly by transferring signals from the cell surface in a sugar-dependent mechanism. Allelic variants of this gene have been associated with obesity.
Synonyms:	SDCN; SYND3



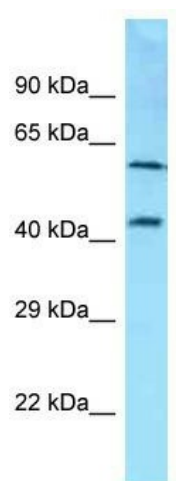
[View online »](#)

Note: Immunogen Sequence Homology: Dog: 100%; Pig: 100%; Rat: 100%; Horse: 100%; Human: 100%; Mouse: 100%; Bovine: 100%; Rabbit: 100%; Guinea pig: 100%; Zebrafish: 93%

Protein Families: Transmembrane

Protein Pathways: Cell adhesion molecules (CAMs), ECM-receptor interaction

Product images:



Host: Rabbit; Target Name: SDC3; Sample Tissue: NCI-H226 Whole Cell lysates; Antibody Dilution: 1.0 ug/ml