

## Product datasheet for **TA343281**

### TAPA1 (CD81) Rabbit Polyclonal Antibody

#### Product data:

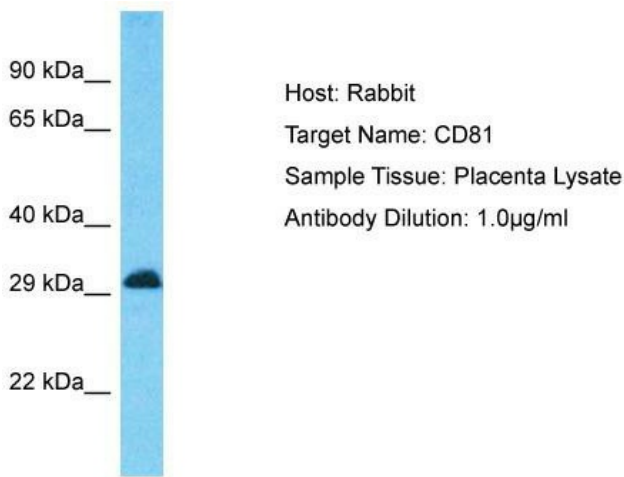
Product Type:	Primary Antibodies
Applications:	IHC, WB
Recommended Dilution:	Formalin Fixed Paraffin Embedded Tissue (Human Liver Tissue): 1:100
Reactivity:	Human
Host:	Rabbit
Isotype:	IgG
Clonality:	Polyclonal
Immunogen:	The immunogen for anti-CD81 antibody is: synthetic peptide directed towards the C-terminal region of Human CD81. Synthetic peptide located within the following region: LKNNLCPSGSNIISNLFKEDCHQKIDDLFSGKLYLIGIAAIVVAVIMIFE
Formulation:	Liquid. Purified antibody supplied in 1x PBS buffer with 0.09% (w/v) sodium azide and 2% sucrose. <i>Note that this product is shipped as lyophilized powder to China customers.</i>
Purification:	Affinity Purified
Conjugation:	Unconjugated
Storage:	Store at -20°C as received.
Stability:	Stable for 12 months from date of receipt.
Predicted Protein Size:	30 kDa
Gene Name:	CD81 molecule
Database Link:	<a href="#">NP_004347</a> <a href="#">Entrez Gene 975 Human P60033</a>
Background:	The function of this protein remains unknown.
Synonyms:	CVID6; S5.7; TAPA1; TSPAN28
Note:	Immunogen Sequence Homology: Human: 100%; Dog: 93%; Sheep: 92%; Pig: 86%; Goat: 83%; Bovine: 83%; Horse: 75%
Protein Families:	Druggable Genome, ES Cell Differentiation/IPS, Transmembrane



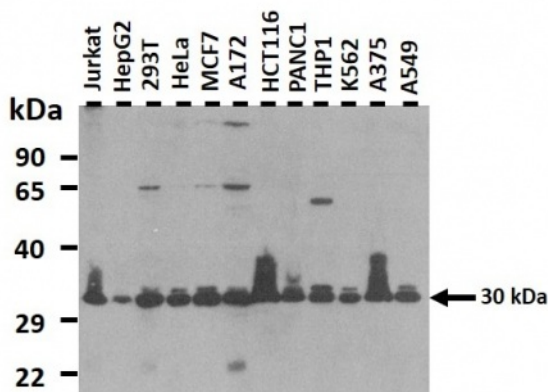
[View online »](#)

Protein Pathways: B cell receptor signaling pathway

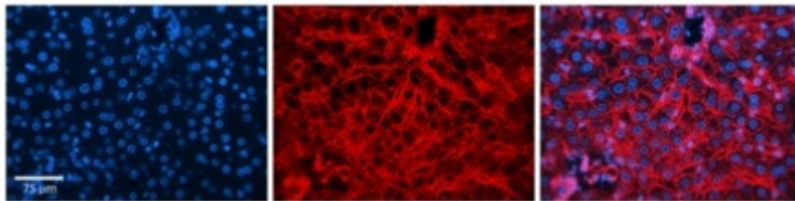
Product images:



Host: Rabbit; Target Name: CD81; Sample Tissue: Placenta lysates; Antibody Dilution: 1.0 µg/ml



25 µg of the indicated Human whole cell extracts was loaded onto a 12% SDS-PAGE gel. 3 µg/µl of the antibody was used in this experiment. Recommended dilution for antibody is 1-3 µg/ml



Rabbit Anti-CD81 Antibody TA343281 Formalin Fixed Paraffin Embedded Tissue: Human Liver Tissue Observed Staining: Cytoplasm and plasma membrane in hepatocytes and endothelial cells in sinusoids Primary Antibody Concentration: 1:100 Secondary Antibody: Donkey anti-Rabbit-Cy3 Secondary Antibody Concentration: 1:200 Magnification: 20X Exposure Time: 0.5 - 2.0 sec