

Product datasheet for **TA343280**

PMP22 Rabbit Polyclonal Antibody

Product data:

Product Type:	Primary Antibodies
Applications:	WB
Recommended Dilution:	WB
Reactivity:	Human
Host:	Rabbit
Isotype:	IgG
Clonality:	Polyclonal
Immunogen:	The immunogen for anti-PMP22 antibody is: synthetic peptide directed towards the N-terminal region of PMP22. Synthetic peptide located within the following region: QWIVGNGHATDLWQNCSTSSSGNVHHCFS SSPNEWLQSVQATMILSIIFS
Formulation:	Liquid. Purified antibody supplied in 1x PBS buffer with 0.09% (w/v) sodium azide and 2% sucrose. <i>Note that this product is shipped as lyophilized powder to China customers.</i>
Conjugation:	Unconjugated
Storage:	Store at -20°C as received.
Stability:	Stable for 12 months from date of receipt.
Predicted Protein Size:	18 kDa
Gene Name:	peripheral myelin protein 22
Database Link:	NP_696996 Entrez Gene 5376 Human Q01453
Background:	This gene encodes an integral membrane protein that is a major component of myelin in the peripheral nervous system. Various mutations of this gene are causes of Charcot-Marie-Tooth disease Type IA, Dejerine-Sottas syndrome, and hereditary neuropathy with liability to pressure palsies. Alternative splicing of this gene results in three transcript variants that encode the same protein.
Synonyms:	CMT1A; CMT1E; DSS; GAS-3; GAS3; HMSNIA; HNPP; Sp110

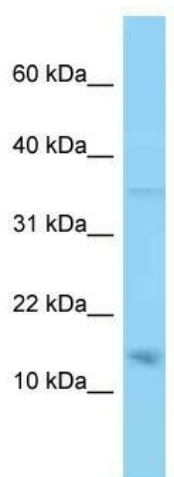


[View online »](#)

Note: Immunogen Sequence Homology: Pig: 100%; Human: 100%; Bovine: 100%; Rabbit: 100%; Guinea pig: 100%; Dog: 93%; Rat: 93%; Horse: 86%; Sheep: 86%

Protein Families: Transmembrane

Product images:



WB Suggested Anti-PMP22 Antibody; Titration: 1.0 ug/ml; Positive Control: 721_B Whole Cell