

## Product datasheet for **TA343279**

### CD79A Rabbit Polyclonal Antibody

#### Product data:

Product Type:	Primary Antibodies
Applications:	WB
Recommended Dilution:	WB
Reactivity:	Human
Host:	Rabbit
Isotype:	IgG
Clonality:	Polyclonal
Immunogen:	The immunogen for anti-CD79A antibody is: synthetic peptide directed towards the C-terminal region of Human CD79A. Synthetic peptide located within the following region: AVVPGTLLLFKRQNEKLGLDAGDEYEDENLYEGLNLDDCSMYEDISRG
Formulation:	Liquid. Purified antibody supplied in 1x PBS buffer with 0.09% (w/v) sodium azide and 2% sucrose. <i>Note that this product is shipped as lyophilized powder to China customers.</i>
Purification:	Affinity Purified
Conjugation:	Unconjugated
Storage:	Store at -20°C as received.
Stability:	Stable for 12 months from date of receipt.
Predicted Protein Size:	24 kDa
Gene Name:	CD79a molecule
Database Link:	<a href="#">NP_001774</a> <a href="#">Entrez Gene 973 Human</a> <a href="#">P11912</a>
Background:	The B lymphocyte antigen receptor is a multimeric complex that includes the antigen-specific component, surface immunoglobulin (Ig). Surface Ig non-covalently associates with two other proteins, Ig-alpha and Ig-beta, which are necessary for expression and function of the B-cell antigen receptor. This gene encodes the Ig-alpha protein of the B-cell antigen component. Alternatively spliced transcript variants encoding different isoforms have been described.
Synonyms:	IGA; MB-1



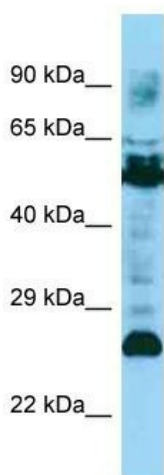
[View online »](#)

**Note:** Immunogen Sequence Homology: Human: 100%; Rat: 83%; Yeast: 79%

**Protein Families:** Druggable Genome, Transmembrane

**Protein Pathways:** B cell receptor signaling pathway, Primary immunodeficiency

### Product images:



Host: Rabbit  
Target Name: CD79A  
Sample Tissue: HT1080 Cell Lysate  
Antibody Dilution: 1.0 $\mu$ g/ml

Host: Rabbit; Target Name: CD79A; Sample Tissue: HT1080 Whole Cell lysates; Antibody Dilution: 1.0 ug/ml