

Product datasheet for **TA343278**

VEGFC Rabbit Polyclonal Antibody

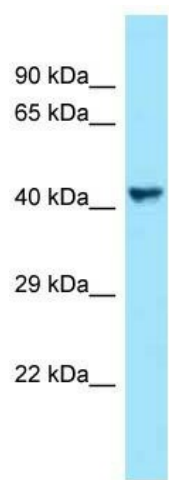
Product data:

Product Type:	Primary Antibodies
Applications:	WB
Recommended Dilution:	WB
Reactivity:	Human
Host:	Rabbit
Isotype:	IgG
Clonality:	Polyclonal
Immunogen:	The immunogen for anti-VEGFC antibody is: synthetic peptide directed towards the C-terminal region of Human VEGFC. Synthetic peptide located within the following region: LDEETCQCVCRAGLRPASCGPHKELDRNSQCVCCKNKLFPSCGANREFD
Formulation:	Liquid. Purified antibody supplied in 1x PBS buffer with 0.09% (w/v) sodium azide and 2% sucrose. <i>Note that this product is shipped as lyophilized powder to China customers.</i>
Purification:	Affinity Purified
Conjugation:	Unconjugated
Storage:	Store at -20°C as received.
Stability:	Stable for 12 months from date of receipt.
Predicted Protein Size:	46 kDa
Gene Name:	vascular endothelial growth factor C
Database Link:	NP_005420 Entrez Gene 7424 Human P49767



[View online »](#)

Background:	The protein encoded by this gene is a member of the platelet-derived growth factor/vascular endothelial growth factor (PDGF/VEGF) family, is active in angiogenesis and endothelial cell growth, and can also affect the permeability of blood vessels. This secreted protein undergoes a complex proteolytic maturation, generating multiple processed forms which bind and activate VEGFR-3 receptors. Only the fully processed form can bind and activate VEGFR-2 receptors. This protein is structurally and functionally similar to vascular endothelial growth factor D.
Synonyms:	Flt4-L; LMPH1D; VRP
Note:	Immunogen Sequence Homology: Human: 100%; Dog: 93%; Pig: 93%; Horse: 93%; Rabbit: 93%; Bovine: 92%; Rat: 86%; Mouse: 86%; Guinea pig: 86%
Protein Families:	Druggable Genome, Secreted Protein
Protein Pathways:	Bladder cancer, Cytokine-cytokine receptor interaction, Focal adhesion, mTOR signaling pathway, Pancreatic cancer, Pathways in cancer, Renal cell carcinoma

Product images:

Host: Rabbit; Target Name: VEGFC; Sample Tissue: NCI-H226 Whole cell lysates; Antibody Dilution: 1.0 ug/ml