

## Product datasheet for **TA343275**

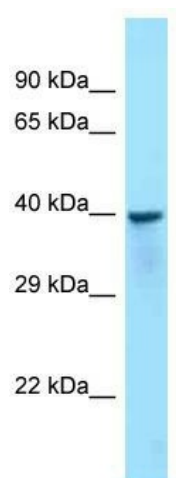
### C17orf66 (HEATR9) Rabbit Polyclonal Antibody

#### Product data:

Product Type:	Primary Antibodies
Applications:	WB
Recommended Dilution:	WB
Reactivity:	Human
Host:	Rabbit
Isotype:	IgG
Clonality:	Polyclonal
Immunogen:	The immunogen for anti-C17orf66 antibody is: synthetic peptide directed towards the middle region of Human C17orf66. Synthetic peptide located within the following region: AILGCLNKHVIRALIKQLKEKNEGQRMETLTGLRMALNSWAAVSKDKRTQ
Formulation:	Liquid. Purified antibody supplied in 1x PBS buffer with 0.09% (w/v) sodium azide and 2% sucrose. <i>Note that this product is shipped as lyophilized powder to China customers.</i>
Purification:	Affinity Purified
Conjugation:	Unconjugated
Storage:	Store at -20°C as received.
Stability:	Stable for 12 months from date of receipt.
Predicted Protein Size:	41 kDa
Gene Name:	HEAT repeat containing 9
Database Link:	<a href="#">NP_689994</a> <a href="#">Entrez Gene 256957 Human</a> <a href="#">A2RTY3</a>
Background:	The function of this protein remains unknown.
Synonyms:	C17orf66
Note:	Immunogen Sequence Homology: Human: 100%; Pig: 83%; Guinea pig: 83%; Horse: 79%



[View online »](#)

**Product images:**

Host: Rabbit; Target Name: C17orf66; Sample  
Tissue: NCI-H226 Whole Cell lysates; Antibody  
Dilution: 1.0 ug/ml