

## Product datasheet for **TA343273**

### ARMCX5 Rabbit Polyclonal Antibody

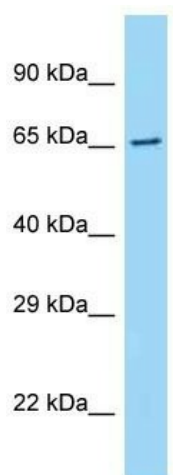
#### Product data:

Product Type:	Primary Antibodies
Applications:	WB
Recommended Dilution:	WB
Reactivity:	Human
Host:	Rabbit
Isotype:	IgG
Clonality:	Polyclonal
Immunogen:	The immunogen for anti-ARMCX5 antibody is: synthetic peptide directed towards the C-terminal region of Human ARM CX5. Synthetic peptide located within the following region: QFKTKAKLFTKEKFTKSELISIFQEAKQFGQKLQDLAEHSDPEVRDKVIR
Formulation:	Liquid. Purified antibody supplied in 1x PBS buffer with 0.09% (w/v) sodium azide and 2% sucrose. <i>Note that this product is shipped as lyophilized powder to China customers.</i>
Purification:	Affinity Purified
Conjugation:	Unconjugated
Storage:	Store at -20°C as received.
Stability:	Stable for 12 months from date of receipt.
Predicted Protein Size:	61 kDa
Gene Name:	armadillo repeat containing, X-linked 5
Database Link:	<a href="#">NP_073749</a> <a href="#">Entrez Gene 64860 Human</a> <a href="#">Q6P1M9</a>
Background:	The function of this protein remains unknown.
Synonyms:	GASP5
Note:	Immunogen Sequence Homology: Dog: 100%; Horse: 100%; Human: 100%; Bovine: 100%; Rabbit: 93%; Rat: 79%; Mouse: 79%



[View online »](#)

## Product images:



Host: Rabbit  
Target Name: ARMCX5  
Sample Tissue: Fetal Liver Lysate  
Antibody Dilution: 1.0 $\mu$ g/ml

Host: Rabbit; Target Name: ARMCX5; Sample Tissue: Fetal Liver lysates; Antibody Dilution: 1.0 ug/ml