

Product datasheet for **TA343272**

ADCK2 Rabbit Polyclonal Antibody

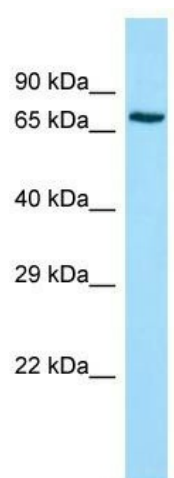
Product data:

Product Type:	Primary Antibodies
Applications:	IHC, WB
Recommended Dilution:	WB
Reactivity:	Human
Host:	Rabbit
Isotype:	IgG
Clonality:	Polyclonal
Immunogen:	The immunogen for anti-ADCK2 antibody is: synthetic peptide directed towards the middle region of Human ADCK2. Synthetic peptide located within the following region: LGNGRKPPENLADQSFLERLLLPKADLVGSNAGVSRAQVPGHQPEATNLI
Formulation:	Liquid. Purified antibody supplied in 1x PBS buffer with 0.09% (w/v) sodium azide and 2% sucrose. <i>Note that this product is shipped as lyophilized powder to China customers.</i>
Conjugation:	Unconjugated
Storage:	Store at -20°C as received.
Stability:	Stable for 12 months from date of receipt.
Predicted Protein Size:	68 kDa
Gene Name:	aarF domain containing kinase 2
Database Link:	NP_443085 Entrez Gene 90956 Human Q7Z695
Background:	The function of this protein is not yet clear. It is not known if it has protein kinase activity and what type of substrate it would phosphorylate (Ser, Thr or Tyr)
Synonyms:	AARF
Note:	Immunogen Sequence Homology: Human: 100%
Protein Families:	Druggable Genome, Protein Kinase

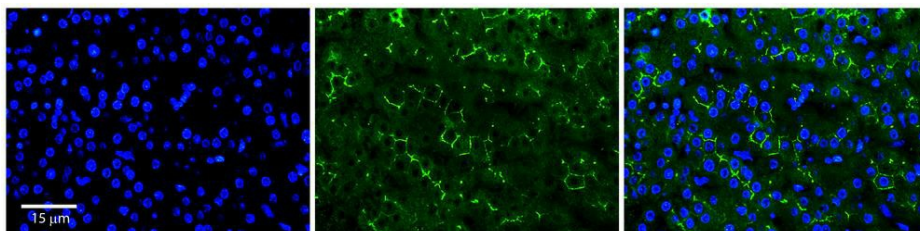


[View online »](#)

Product images:



Host: Rabbit; Target Name: ADCK2; Sample Tissue: Jurkat Whole Cell lysates; Antibody Dilution: 1.0 ug/ml ADCK2 is supported by BioGPS gene expression data to be expressed in Jurkat



Rabbit Anti-ADCK2 Antibody; Formalin Fixed Paraffin Embedded Tissue: Human Adult Liver; Observed Staining: Membrane in bile canaliculi, strong signal, wide tissue distribution; Primary Antibody Concentration: 1:100; Secondary Antibody: donkey anti-rabbit